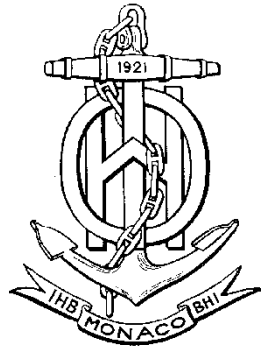


INTERNATIONAL HYDROGRAPHIC ORGANIZATION



SPECIFICATIONS FOR CHART CONTENT AND DISPLAY ASPECTS OF ECDIS

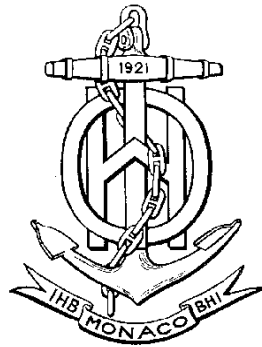
Edition 6.1(.1), October 2014
With Clarifications up to June 2015

Publication S-52

**Published by the
International Hydrographic Organization
MONACO**

Page intentionally left blank

INTERNATIONAL HYDROGRAPHIC ORGANIZATION



SPECIFICATIONS FOR CHART CONTENT AND DISPLAY ASPECTS OF ECDIS

Edition 6.1(.1), October 2014
With Clarifications up to June 2015

Publication S-52

published by the
International Hydrographic Organization
4b quai Antoine 1^{er}
B.P. 445 - MC 98011 MONACO Cedex
Principauté de Monaco
Tel: (377) 93.10.81.00
Fax: (377) 93.10.81.40
E-mail: info@iho.int
Web: www.iho.int

This work is copyright. Apart from any use permitted in accordance with the Berne Convention for the Protection of Literary and Artistic Works (1886), and except in the circumstances described below, no part may be translated, reproduced by any process, adapted, communicated or commercially exploited without prior written permission from the International Hydrographic Bureau (IHB). Copyright in some of the material in this publication may be owned by another party and permission for the translation and/or reproduction of that material shall be obtained from the owner.

This document or partial material from this document may be translated, reproduced or distributed for general information, on no more than a cost recovery basis. Copies may not be sold or distributed for profit or gain without prior written agreement of the IHB and any other copyright holders.

In the event that this document or partial material from this document is reproduced, translated or distributed under the terms described above, the following statements are to be included:

“Material from IHO publication [reference to extract: Title, Edition] is reproduced with the permission of the International Hydrographic Bureau (IHB) (Permission No/...) acting for the International Hydrographic Organization (IHO), which does not accept responsibility for the correctness of the material as reproduced: in case of doubt, the IHO’s authentic text shall prevail. The incorporation of material sourced from IHO shall not be construed as constituting an endorsement by IHO of this product.”

“This [document/publication] is a translation of IHO [document/publication] [name]. The IHO has not checked this translation and therefore takes no responsibility for its accuracy. In case of doubt the source version of [name] in [language] should be consulted.”

The IHO Logo or other identifiers shall not be used in any derived product without prior written permission from the IHB.

CHANGE CONTROL HISTORY SINCE 2010

Amendment Abbreviations: MD Maintenance Document
IA Immediate Amendment
DA Deferred Amendment

**Specifications for Chart Content and Display Aspects of ECDIS
(S-52)**

Previous Edition	Amendments Applied	Resulting Edition
Edition 6.0(Mar 2010)	Deleted Annex B and corrections made to Annex C (not from an amendment)	Edition 6.1.0 (Oct 2014)
Edition 6.1(.0) (Oct 2014)	Clarifications and other edits (not from an amendment)	Edition 6.1(.1) (Oct 2014) (With Clarifications up to June 2015)

**Refer to the relevant Annex or Appendix for the
Change Control History of the subordinate parts of S-52**

Page intentionally left blank

TABLE OF CONTENTS

	page
1 INTRODUCTION.....	1
1.1 Aims and Background	1
1.2 Concept and limitations of ECDIS.....	5
1.3 Function and Use of S-52	6
1.4 Structure of the Specifications	6
2 CONSIDERATIONS; ORGANISING THE DISPLAY	13
2.1 General Considerations.....	13
2.2 Operational Considerations	15
2.3 Organising the Information for Display.....	18
3 SPECIFICATIONS FOR SYMBOLISING AREAS, LINES & POINTS AND FOR TEXT.....	26
3.1 General	26
3.2 New Symbols for ECDIS.....	31
3.3 Existing Chart Symbols	38
3.4 Text, Diagrams etc.	38
4 SPECIFICATIONS FOR COLOURS	40
4.1 General	40
4.2 Colour Assignment	40
5 SPECIFICATIONS FOR THE DISPLAY SCREEN	46
5.1 Physical display requirements	46
5.2 Additional Requirements	46
ANNEX A IHO ECDIS PRESENTATION LIBRARY	59
ANNEX B (DELETED).....	60
ANNEX C PROCEDURE FOR MAINTAINING THE CALIBRATION OF DISPLAYS ...	61

Notes:

- 1) Throughout these specifications, *italics* are used to distinguish discussion or recommendations from the specifications. The specifications are in plain type.
- 2) Quotations from these specifications may be used in the manufacturer's manuals. The source should be acknowledged.

Page intentionally left blank

1 INTRODUCTION

1.1 Aims and Background

1.1.1 Aims

These Specifications for Chart Content and Display Aspects of ECDIS are intended to contribute to the safe operation of ECDIS by:

- ensuring a base and supplementary levels of display for ENC data; standards of symbols, colours and their standardized assignment to features; scale limitations of data presentation; and appropriate compatibility with paper chart symbols as standardized in the Chart Specifications of the IHO.
- ensuring the display is clear and unambiguous,
- ensuring that there is no uncertainty over the meaning of colours and symbols on the display,
- establishing an accepted pattern for ECDIS presentation that becomes familiar to mariners and so can be recognized instantly without confusion.

1.1.2 Definitions

ECDIS terminology used in these Specifications is defined in the IHO S-32 "IHO Hydrographic Dictionary", Appendix 1, "Glossary of ECDIS-related Terms."

1.1.3 Historical Background

In 1986 the North Sea Hydrographic Commission completed a study on the consequences of the development of Electronic Chart Display and Information Systems (ECDIS) for Hydrographic Offices (HOs). Its conclusions included:

(1) Specifications for standardized data content, format and updating procedures should be arrived at by a new IHO ECDIS Working Group as a matter of high priority.

(2) To assure the integrity of Electronic Navigational Charts (ENCs), their production should be the responsibility of the Hydrographic Offices; the ENCs will be made available in a standard format and all equipment should be designed to accept it.

(3) When official ENCs are available, ECDIS users should be required to carry them in full, and ECDIS manufacturers or other intermediaries should not make preliminary selections of data before supplying them to the mariners.

*It was then decided to establish an International Hydrographic Organization (IHO) Committee on ECDIS (COE *).*

As several manufacturers were now developing these systems, it was of immediate importance to all concerned (Hydrographic Offices, mariners, national shipping authorities, and manufacturers) to have at least a first draft of the IHO and International Maritime Organization (IMO) guidance for both the Electronic

* Subsequently renamed the Committee on Hydrographic Requirements for Information Systems (CHRIS) and now known as the Hydrographic Services and Standards Committee (HSSC).

Navigation Chart (ENC) and its display systems.

Therefore, the COE asked the Netherlands Hydrographer to prepare a working paper on ECDIS specifications to address the following issues:

(1) Minimum and supplementary data content of the ENC and required characteristics of that data base such as the cataloguing of sea areas, density of digitization of chart data and reliability and worldwide compatibility of chart data and other nautical information produced.

(2) Minimum and supplementary content of the ENC display, standards of symbols, colours and their standardized assignment to features, scale limitations of data presentation, and appropriate compatibility with paper chart symbols as standardized in the Chart Specifications of the IHO.

(3) Methods for the timely updating of the ENC, and means to ensure worldwide compatibility of the correction system data.

(4) Criteria for a standard format for exchange of digital data for the ECDIS between Hydrographic Offices and for supply to the data user, and procedures and financial aspects of such an exchange and supply

A first draft of the specifications was presented to IHO Member State Hydrographers in May 1987 at the 13th International Hydrographic Conference in Monaco. This draft was also widely distributed to National Shipping Authorities, mariner associations and manufacturers, for comment.

In November 1988, the COE established the Colours & Symbols Maintenance Working Group (CSMWG) to develop specifications and guidelines for chart symbol and colour definition for evaluation by hydrographic offices, ECDIS users, and manufacturers.

In January 1989, the Safety of Navigation sub-committee of the IMO Maritime Safety Committee noted the need to define symbols and colours for both chart and navigation purposes, and invited the Comité International Radio-Maritime (CIRM) and the IHO to make detailed technical proposals.

Work on ECDIS display design had already started, exemplified by the Canadian E.C. Testbed on the Norwegian "North Sea Project" in 1988. The CSMWG made its first report in September 1989, based on a study for the Netherlands HO by the TNO Perception Institute, and a review by the DCIEM Perception Institute, Toronto. The initial performance specifications were prepared in June 1990.

Seven Cs GmbH, of Hamburg, developed a digital Provisional Presentation Library, under contract to Canada and the United States, leading to the development of the Presentation Library over the next two years, and culminating in the issue of the first operational editions after a meeting of CSMWG in November 1994. Meanwhile, more research and development in colours and symbols was carried out in Canada. Australia also provided support for completing the Presentation Library and the Mariner's Navigational Object catalogue which implements the IEC Navigational Symbols.

In parallel with the development of the IHO Specifications, the IMO/IHO Harmonizing Group on ECDIS developed Provisional Performance Standards for ECDIS, which were first published in May 1989 by the IMO. An amended version of the Provisional Performance Standards was prepared in the light of experience

and it was adopted in 1995 through IMO resolution A.817(19). The Performance Standards have incorporated many of the elements of the original IHO Specification. Therefore, S-52 now only provides the details of the hydrographic requirements for ECDIS.

Another parallel effort was carried out by the IHO Committee on Hydrographic Requirements for Information Systems (CHRIS), which developed the S-57, "IHO Transfer Standard for Digital Hydrographic Data." S-57 describes the standard to be used for the exchange of ENC data. It was adopted by the 14th International Hydrographic Conference, Monaco, May 1992. The IHO Transfer Standard Maintenance and Application Development Working Group (TSMAD) currently maintains S-57.

While many of the general elements of S-52 were being incorporated into the IMO Performance Standards, the specifics were being expanded in the S-52, Appendix 2, "Colour & Symbol Specifications" into a model for presenting all chart and navigational objects on the ECDIS display, according to the developing IMO requirements. IHO published a provisional edition of the S-52, Appendix 2 in 1991 and the first operational edition, complete with Annex A, "Presentation Library", was issued in 1994.

After 1994, considerable maintenance to adapt the colours and symbols Specifications and Presentation Library to sea experience and to changes in S-57 was carried out in Canada, first by USL/CARIS of Fredericton and later by NDI of St. Johns, funded by the Canadian Hydrographic Service and the Canadian Coast Guard.

In 2001, the Federal Maritime and Hydrographic Agency of Germany (BSH), relieved the Canadian Hydrographic Service as the HO responsible for ECDIS Colours and Symbols. In 2004, a new edition bringing all accumulated deferred amendments into effect was issued. It included a detailed 'hard-copy' version of the symbol library developed at Hochschule Wismar, Fachbereich Seefahrt Warnemunde; in addition Furuno, Helsinki, provided the updated digital version for those who use it.

The version of S-52 published in 2008 focused on adapting Appendix 2, Annex A to the revised IMO ECDIS Performance Standards and the introduction of new symbology for Particular Sensitive Sea Areas, Archipelagic Sea Lanes and generic objects which may be used for future cartographic requirements initiated by the IMO.

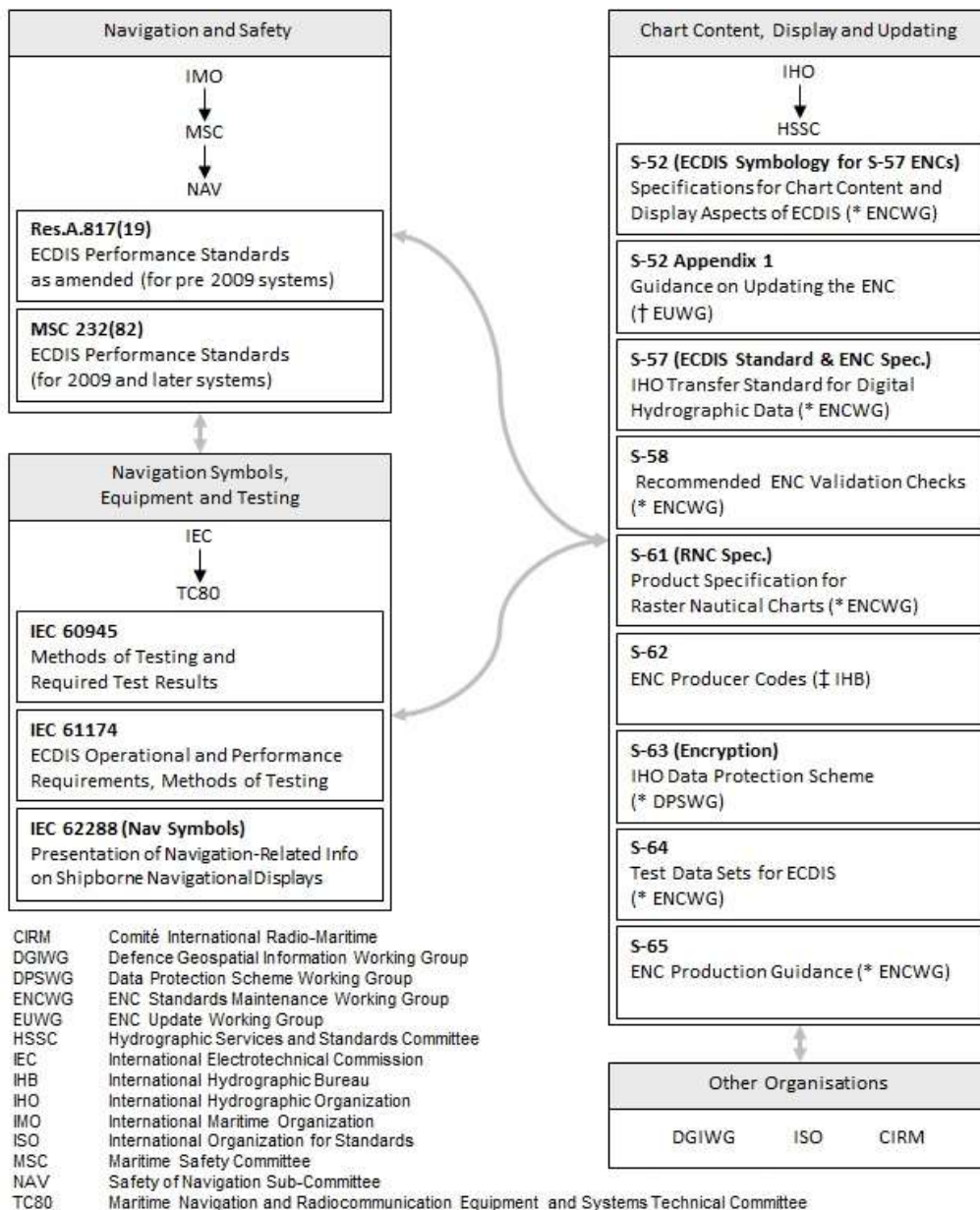
In 2008, the 20th meeting of CHRIS endorsed the recommendation of the CSMWG to revise and restructure S-52 to accommodate the revised IMO ECDIS Performance Standards, MSC.232(82) and the associated new IEC 61174 Specification for ECDIS type approval testing. This has resulted in the creation of Edition 6 of S-52. All references to the previous IMO Performance Standards have been replaced with the appropriate references to MSC.232(82). The structure of S-52 has also been simplified; the S-52, Appendix 2 has been incorporated into the main portion of S-52 and the three annexes of the former Appendix 2 have become annexes to the main document. All of the Appendix 2 paragraph numbers have been retained in the newly integrated S-52 main document so that references to the former S-52, Appendix 2 may be mapped directly to the revised main portion of S-52.

CHRIS, which changed its name to the Hydrographic Services and Standards Committee (HSSC) in 2009, also changed the name of the CSMWG to the Digital Information Portrayal Working Group (DIPWG). The scope of the DIPWG was also redefined to include maintenance of all components of S-52, except for Appendix 1, "Guidance on Updating the Electronic Navigational Chart," which was delegated to the new ENC Updating Working Group (EUWG) to "review and revise."

1.1.4 International organizations and their related standards for ECDIS

The relationships among the international organizations and working groups that have made important contributions to the development of ECDIS are shown schematically in Figure 1.

Figure 1. International Organizations Involved in ECDIS Standardization



The following have been used as references within these Specifications:

- (1) IMO Performance Standards for ECDIS, 1995 edition (Resolution A.817(19) refers) and current edition (Resolution MSC.232(82) refers);
- (2) IHO S-57 "IHO Transfer Standard for Digital Hydrographic Data", current edition, IHB, Monaco;
- (3) IHO INT 1 "Symbols, Abbreviations, Terms used on Charts". BSH, Hamburg, current edition;
- (4) IEC 62288 "Presentation of navigation related information - General requirements, methods of test and required test results", current edition;
- (5) IEC 61174 "ECDIS - Operational and performance requirements, methods of testing and required test results", current edition;
- (6) IEC 60945 "Maritime Navigation and Radio Communication Equipment and Systems – General Requirements – Methods of Testing and Required Test Results", current edition;
- (7) IHO S-32 Appendix 1: "Hydrographic Dictionary - Glossary of ECDIS-related terms", current edition.
- (8) IHO S-60 "User's Handbook on Datum Transformations involving WGS-84", current edition

Excerpts from the above references are quoted where they form a necessary part of these specifications.

1.2 Concept and limitations of ECDIS

It may be noted that the concept of ECDIS is outlined in the introduction section of the IMO Performance Standards. The following contains additional ECDIS related considerations.

- (a) ECDIS, used together with official data, [is] accepted as complying with the up-to-date charts carriage requirements for nautical publications required by regulation V/19 of the 1974 SOLAS Convention amended in 2009. It may be noted that electronic chart systems not meeting these ECDIS specifications of IHO and IMO, or ECDIS using non-official data, are known as ECS (Electronic Chart Systems).
- (b) Chart information may be used in conjunction with a radar overlay on ECDIS. Integration of tracked radar targets provided for collision avoidance radar (ARPA) and targets tracked by AIS (Automatic Identification System) into the ECDIS display is another option.
- (c) The colours and symbols defined in this Specification are conceptually based on the familiar symbology of conventional paper charts. However, due to the special conditions of the ECDIS chart display as a computer generated image, the ECDIS presentation of ENC data does not match the appearance of a conventional paper chart closely. Instead, there are considerable differences in symbology in shape, colour and size, and in the placement of text in particular. The display of the ENC data and the conventional paper

chart do not necessarily have to be identical in their appearance.

- (d) ECDIS combines chart and navigational positioning information. It should be noted that modern navigation systems (e.g. differential GPS) may offer a more accurate positioning than was available to position some of the surveys from which the digital chart data ENC was derived.
- (e) The display categories specified in the IMO Performance Standards and the IHO priorities of the various types of chart information (alarms, updates, mariner's and non-HO chart data, etc.) are applied to every object by the display category and draw priority assignments of the look-up tables and symbolisation procedures of Annex A of this Specification.
- (f) Depth information should only be displayed as it has been provided in the ENC and not adjusted by tidal height.

1.3 Function and Use of S-52

- (a) The IHO has produced Specifications for the Chart Content and Display Aspects of ECDIS that appear in this publication (S-52), in order to ensure that hydrographic data supplied by its Member States' HO is used in a manner that will enhance the safety and efficiency of navigation by satisfying the requirements set out in the IMO Performance Standards for ECDIS.
- (b) The objective stated in (a) is also met through the publication of the "IHO Transfer Standard for Digital Hydrographic Data" (S-57) which includes the "ENC Product Specification" (S-57, Appendix B.1).
- (c) S-52 should be read with the IMO Performance Standards. It should also be read in conjunction with the ENC Product Specification in S-57.
- (d) Users of these Specifications should also refer to publications of the International Electrotechnical Commission (IEC) when dealing with equipment design and tests.
- (e) Not all operational aspects of the updating mechanism of ECDIS contained in Appendix 1 "Guidance on Updating the Electronic Navigational Chart" are mandatory for an ECDIS and should primarily be read as guidance. Since Appendix 1 was drafted, much practical experience with ECDIS and its updating mechanisms have been gained and advanced requirements for operational behaviour of ECDIS updating mechanisms may supersede the guidance given in Appendix 1 of this Specification.

1.4 Structure of the Specifications

1.4.1 S-52 components

These Specifications consist of the following components (see Figure 2):

- .1 The **Specifications for Chart Content and Display Aspects of ECDIS**, which describes the requirements and methods in relatively general terms.
- .2 Annex A, the **Presentation Library** as a separate document, which gives full details of colours, symbols, symbolization instructions, etc. together with guidance on how an ENC should be displayed. A digital version is also

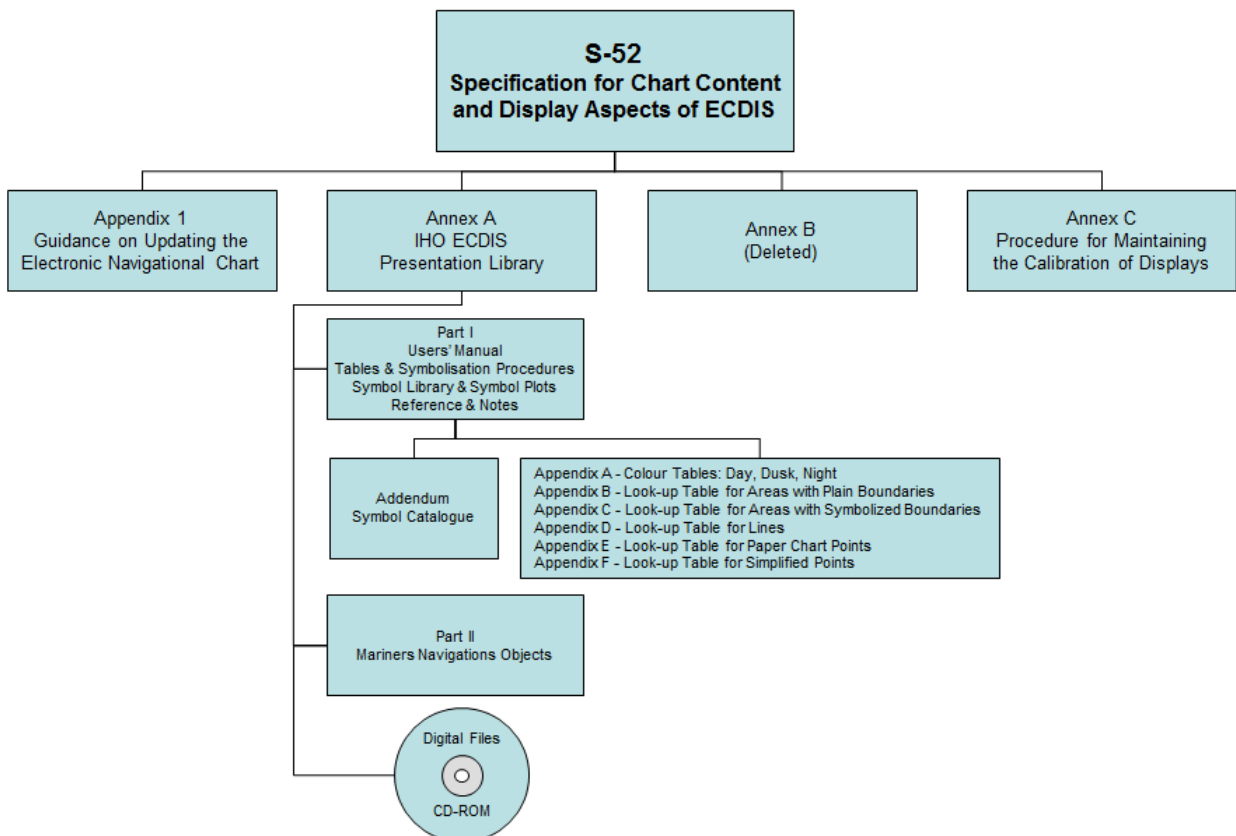
available. Annex A itself consists of three components:

- Part I contains chart objects
 - Part I also has six appendices that are separate files. One (Appendix A) contains values for the three colour tables; the other five (Appendices B-F) contain symbolization look-up tables
- Part II contains a few Mariner's Navigational Objects, such as Danger highlight or Mariner's feature.
- The third component is the addendum to Part I which is a paper based description of the symbol library as graphics.

The ECDIS Chart 1 is issued together with the Presentation Library as a graphic file and is also available as a collection of the varying objects contained in a special cell in S-57 format containing generic feature objects.

- .3 Annex B, (this annex has been deleted)
- .4 Annex C, which specifies a procedure for maintaining the calibration of displays.
- .5 Appendix 1, Guidance on Updating the Electronic Navigational Chart.

Figure 2 - S-52 Document Structure



1.4.2 Presentation Library and its status

The Presentation Library links every object class and attribute of the SENC, including the IEC Mariner's Navigational Objects, to the appropriate presentation on the ECDIS display. It carries all the details of these specifications, organised as shown on figure 2.

A digital version in .dai format containing the Symbol Library, Colour Tables and Look-up Tables is provided as a manufacturer's option.

Note that the Presentation Library contains some features and procedures which are not required in the IMO standards or IEC specifications, such as four depth shades, etc. These are identified, and their use is optional.

References to the Presentation Library in this document refer to its Part I unless otherwise stated. Also, the Presentation Library is sometimes abridged to "PresLib".

1.4.3 Amending the Colour & Symbol Specifications and the Presentation Library

- 1.4.3.1 In the life of each edition of S-52, amendments to the structure of the Presentation Library which might affect the ECDIS software (for example changing the number of fields in the look-up tables, or changing the logic of a conditional symbology procedure) will be avoided as far as possible. However incremental changes to detail in these Specifications and the Presentation Library will be required.

In a major revision, changes in structure will be made if necessary. Details of the amendment process are given in 1.4.4 below.

- 1.4.3.2 The current editions of S-52 remain in force until the issue of either:

- (a) an immediate correction which is essential for reasons of safety of navigation,
or
(b) a new edition which is identified as bringing outstanding deferred amendments into force.

Either of these will result in a new edition of these Specifications and/or the Presentation library, whichever is affected.

- 1.4.3.3 Amendments will be distributed as described in section 1.4.4 for information or for implementation. As noted above, immediate correction amendments may have to be issued under certain circumstances.

The manufacturer should implement any immediate corrections in all his ECDIS systems fitted onboard ship, as soon as possible.

When an amendment is implemented in a type-approved ECDIS, the manufacturer should inform the type approval authority in case re-testing may be required.

1.4.4 Amendment Procedures

1.4.4.1 Definitions of three classes of amendments.

- (i) "Clarification": an improvement to the wording of S-52 which does not result in any substantive change to the specifications. A substantive change is one which would result in a change in symbolization.

- (ii) "Correction": a relatively specific change to S-52 to correct errors of commission or omission; or to improve the ECDIS presentation in the light of practical experience; or to take into account changes in another specification; etc.
- (iii) "Extension": an extension has no immediate effect. It is a more general change to S-52 intended to improve the ECDIS presentation.

1.4.4.2 Amendments. An amendment may consist of more than one item, as follows:

- an immediate amendment will contain only immediate correction items,
- a deferred amendment may contain either:
 - (a) clarifications and deferred correction items, or
 - (b) extension items, which are distributed separately.

1.4.4.3 Immediate and deferred amendments. In exceptional cases, applying only to corrections and only where a correction affects safety of navigation, an immediate amendment will be made.

Normally, the implementation of amendments will be deferred until the next edition which is identified as bringing outstanding deferred amendments into force.

1.4.4.4 Edition number of these Specifications and the PresLib. The respective edition numbers of these Specifications and of the PresLib are of the form "mm.n" where "mm" is the edition number which changes for a major change in the specification, and "n" is an incremental change number which increases by one for every immediate amendment applied. The edition number does not change for a deferred amendment.

Major revisions of these Specifications and the PresLib will be identified by an increment in the "mm" number, followed by a zero, i.e. 04.0, 05.0, etc. Smaller revisions involving immediate amendments, and also revisions which are not major but bring outstanding deferred amendments into force, will be identified by an increment in the "n" number, e.g. 04.1, 04.2, etc.

It should be possible to identify the edition number in use on the ECDIS.

Edition numbers refer only to these Specifications and to the Presentation Library. Edition numbers are used in the numbering of amendment items in order to point to the particular edition of these Specifications or PresLib to which that item should be applied. For example amendment item no. "PL04.0.d7.co.2" should be applied to the Presentation Library Edition 4.0.

1.4.4.5 Amendment item identifiers. Each item within an amendment is assigned a unique identifier, with the following form "ssmm.n.aa.dd.nnn", where:

- | | | |
|------|---|---|
| ss | = | Specifications for Chart Content and Display Aspects of ECDIS (CS) or Presentation Library (PL), depending on which the amendment applies to, |
| mm.n | = | the edition number to which the amendment applies, |
| aa. | = | deferred (d) or immediate (i) amendment followed by the sequential number of the amendment, |
| dd. | = | clarification (cl), correction (co) or extension (ex), |
| n | = | sequential number of the item within the amendment. |

For example, look at item no: "PL04.0.d7.co.2", reading from the last number group back to the first:

"2" this is item 2 of the amendment,
"co" this item is a correction,
"d7" it is a part of deferred amendment 7,
"PL04.0" it applies to PresLib edition 4.0.

(Note that:

- i) the edition number of the PresLib would not advance after applying this deferred amendment.
- ii) If this example had been an immediate amendment the item number would have been PL04.0.i7.co.2". In the case of an immediate amendment the edition number of the PresLib would have automatically advanced to 4.0 once the amendment was applied.
- iii) The next amendment would have been numbered "amendment 8" whether it was an immediate amendment or a deferred amendment.)

1.4.4.6 Distribution

1.4.4.6.1 Immediate corrections to both these Specifications and the Presentation Library are posted on the IHO website www.iho.int. They will need to be applied to the current edition of S-52.

1.4.4.6.2 Clarifications and deferred corrections. These deferred amendments will be posted on the IHO website www.iho.int.

All existing deferred amendments will be implemented in the next edition of S-52 which is identified as bringing them into force. However an ECDIS manufacturer may implement a deferred amendment earlier if he wishes to do so, except when it is specifically stated that a particular amendment should not be implemented before the edition bringing deferred amendments into force is issued (in order to preserve uniformity in symbolising the ENC).

When an amendment is implemented in a type-approved ECDIS, the manufacturer should inform the type approval authority in case re-testing may be required.

1.4.4.6.3 Extensions are working documents, available from the IHB for test purposes on request. A description of the extension will be put on the IHO website www.iho.int.

1.4.4.6.4 Before and after plots. Where appropriate, before and after plots will, whenever possible, accompany amendments that make a change in symbolization.

1.4.4.6.5 Change control history. Amendments will include a change control history and a reference to the current editions. The history of the previous changes to these specifications and the Presentation Library is provided at the beginning of this document.

1.4.4.7 Application and entry in to force.

The grace periods from the issuing date of a new edition after which changes are required to be included in an ECDIS are:

- | | |
|--|----------|
| - for new development | one year |
| - for new selling (already type-approved before date of issue) | one year |

1.4.5 Note on the Specifications as a whole

The effective use of chart colours and symbols on the ECDIS display requires consideration of a variety of factors: purpose (e.g. route planning/route monitoring); bridge lighting conditions (e.g. day/night lighting); human factors (e.g. colour perception, stress); interaction with "non-chart" information on the display (e.g. ship's tracks, navigator's notes, radar); interaction with other displays on the bridge (e.g. ARPA); ECDIS interactions (e.g. relation between ENC structure and display capability); technology (e.g. display calibration); and so on.

The working group has used good advice from ergonomic professionals and ECDIS manufacturers, and has taken advantage of the limited opportunities to test the standards at sea. However the group is conscious that operational sea experience, adaptations in the mode of use of ECDIS and technology developments will probably bring about the need for considerable modifications to the standards in the future.

Reports of experience with these specifications will be welcomed. They should be sent to:

The Chairman, IHO DIPWG, International Hydrographic Bureau, BP 445, MC 98011, Principality of Monaco. [E-mail: info@iho.int](mailto:info@iho.int).

1.4.6 Type Approval - Minor Deviations to the Presentation Library

It is acknowledged that the manufacturers of navigational equipment and software are in constant contact with ECDIS users. To allow for fast response to suggestions for improvement to the chart display, the IHO Presentation Library for ECDIS is designed to provide a framework and guideline for chart symbolization from which the ECDIS manufacturer can derive a customized Presentation Library. The following criteria shall serve as a guide for judging whether any symbolization on an ECDIS which is visibly different from the symbolization provided by the IHO Presentation Library and as demonstrated by the IHO Test Data Set print-outs is still compliant. The symbolization used:

- 1.) should be the same in general shape and size as the IHO version;
- 2.) should be clear and sharp so that there is no uncertainty over meaning;
- 3.) should be close enough to the IHO version to avoid ambiguity in meaning between that model and any other model of ECDIS;
- 4.) should use only the colours as specified in S-52;
- 5.) should comply with the various considerations of scientific design described in S-52;
- 6.) should comply with the priority of prominence on the display in proportion to importance to safety of navigation which is built into the Presentation Library, and
- 7.) should avoid any increase in clutter.

Any symbolization which does not meet these criteria is not compliant.

The type-approval authority is strongly encouraged to contact the chairman of the IHO DIPWG in any case of uncertainty over differences in symbolization, ideally attaching graphics to illustrate the situation. The chairman of the WG will give the reason for the particular symbolization on the Test Data Plots, and will comment on any perceived advantages or disadvantages of the manufacturer's version, with reasons.

Manufacturers, type-approval authorities, and above all mariners, are always encouraged to contact the IHO over any improvements, criticisms, questions or comments that they may have about the ECDIS display, in order that the specifications can be kept effective and up to date. Send informal notes to the address in paragraph 1.4.5.

2 CONSIDERATIONS; ORGANISING THE DISPLAY

2.1 General Considerations

2.1.1 Design considerations

The aim is to ensure that the ECDIS display is always clear and unambiguous. As an operational navigation display, there must be no doubt what the features shown are and what they mean. The basic principle of good display design is to keep the display simple and un-cluttered, and to use well-designed symbols and colours.

A number of guidelines have been used for designing this operational ship-handling display:

- *Contrast is needed to carry information; this may be colour contrast or luminance contrast, or contrast from differing linestyles or symbol shapes. All these inter-relate with each other,*
- *When planning colours, begin with the background colours, the area fills for depth zones and land. Then work on the foreground lines and symbols, making sure they have good contrast with all their backgrounds,*
- *Use redundant coding for important features. For example the ship's planned route is a prominent dark red, which shows well against both the white deep water of the daytime colour table and the black deep water at night, and it is also a thick dotted line, the only such line on the display,*
- *Design for the worst case; fit the rest in afterwards. For the ECDIS this means setting up the display for bright sunlight, when all but the starkest contrast will disappear, and for night when so little luminance is tolerated that area colours are reduced to shades of dark grey (maximum luminance of an area colour is 1.3 cd/sq.m compared with 80 cd/sq.m. for bright sun) and only fine lines can be bright,*
- *Keep the software simple. For example, linewidths are not changed for different colour tables as this would require a conditional symbology procedure.*

2.1.2 The diversity and flexibility of ECDIS

The challenge presented by the versatility of ECDIS is illustrated below:

The diversity of information may include:

- *physical chart information, (e.g. coastline, depth contours, buoys),*
- *traffic routeing; specified areas; cautions; etc.,*
- *supplementary HO information from light list, etc.,*
- *mariner's notes; additional local chart information; manufacturer's information,*
- *chartwork such as planned route; electronic bearing lines and range rings; etc.,*
- *own ship's position and velocity vector; ship's head and rate of turn; past track,*
- *fix accuracy, or position check from secondary positioning system,*
- *possibly, shiphandling options, based on ship's characteristics, alphanumeric navigation information (ship's latitude, longitude, heading, course, etc.),*
- *information from radar and other sensors,*

- information from AIS,
- navigational indications and alarms generated by ECDIS,
- possibly, telemetered information from shore authorities, (traffic, real-time tides etc.),
- possibly, ice information,
- reminders, (e.g. time to contact pilot station),
- possibly, messages from other displays (e.g. alarm on engine room display).

The flexibility of presentation may include:

- displaying/removing various types of chart and non-chart information,
- selecting standard chart display or a thinned out display, and full or simplified symbols,
- using cursor interrogation for further detail,
- overlaying/removing radar video or radar target information (in order to: confirm ship's positioning; aid radar interpretation; show the entire navigation situation on one screen),
- overlaying/removing various other sensor information, or information telemetered from shore,
- changing the scale or orientation of the display,
- selecting true motion or relative motion,
- changing screen layout with windowed displays, text information in the margins, etc.,
- possibility of pull-down menus and other operator interaction devices being alongside the operational navigation display and so interacting with it,
- giving navigation and chart warnings such as "too close approach to safety contour"; "about to enter prohibited area"; "overscale display"; "more detailed (larger scale) data available"; etc.,
- possibly, a diagrammatic representation of a computer evaluation of grounding danger,
- possibly, a diagrammatic representation of the immediate vicinity of the ship to aid in close quarters manoeuvring,
- other future developments. (Further presentation requirements and techniques appropriate to ECDIS are likely to be developed in future).

2.1.3 Colour discrimination on the display: perception effects and display calibration

Since colour is a prime means of distinguishing features, the maximum range of colours should be available. However the colours selected must be such that they can be clearly discriminated by a mariner with normal colour vision, and colour induction effects must be avoided (for example a small green object on a saturated blue background will tend to appear yellow).

Absolute accuracy in colour reproduction is not required but relative colour fidelity is important. To ensure clear contrast between colour-coded features the display screen should be calibrated before use, and this calibration should as far as possible be maintained while in service. If this is not done, lines, symbols, and area shades may become indistinct, and information may then be lost or become misleading. This problem is discussed in section 4 and 5 and Annex C.

The ambient lighting on the bridge varies between the extremes of bright sunlight, which washes out information on the display, and night, when the light emitted by the display has to be low enough that it does not affect the mariner's night vision. These specifications have been designed to meet these difficult requirements rather than less demanding normal day conditions.

2.2 Operational Considerations

2.2.1 Similarity to the paper chart

Because much experience is embodied in the paper chart, and to avoid confusion in the extended period while paper charts and ENC's co-exist, the two presentations should be similar wherever possible. While recognising that the application of ECDIS extends beyond that of the paper chart, paper chart practice should be followed unless otherwise specified in these specifications.

However, because the ECDIS display uses emitted light, compared with reflected light for the paper chart, ECDIS must switch to a negative image of the chart at night, using a dark background in place of the white background of the paper chart, in order not to impair night vision.

In addition, studies and early experience indicate that the need for good visual communication between the ECDIS display and the user may require simplification and change of symbols traditionally used on paper charts. Some alternative display methods have been introduced as options in the Presentation Library.

2.2.2 Distinguishing between features and between sources

It should be possible to distinguish clearly on the display between a very large number of features. These are listed as classes in section 2.1, such as different water depths, various types of buoys and beacons, chart lines compared with navigators' lines, and so on. It should also be possible to distinguish between sources, such as ENC information; hand-entered N to Ms, local information, and mariner's notes and manufacturer's additional information.

The means available for coding these distinctions are limited. They include:

- coloured areas, lines and symbols,
- coded lines (e.g. dashed) and areas (e.g. patterned),
- symbols,
- text labels (but these cause clutter),
- cursor interrogation,
- switching a class of information on/off either automatically or by hand,
- splitting information into separate windows,
- common sense interpretation (e.g. a red buoy, a red arc indicating a light sector, and a dotted red line indicating planned route, are unlikely to be confused, even though all are coloured red).

Because there are more demands for making distinctions than there are coding methods available, duplicate coding will sometimes be unavoidable, as in the above example.

Distinctions should be made logically and systematically, giving priority to features that have greater operational significance.

2.2.3 Route Planning / Route Monitoring: Look-ahead

The IMO Performance Standards for ECDIS distinguish between the route planning and route monitoring modes of using ECDIS. It is expected that in route planning the display will be viewed, without urgency, from the normal screen viewing distance of about 70 cm, and so the display can contain considerable detail without causing confusion.

Experience up to now of route monitoring indicates that in that mode the display will be used for immediate decision-making, sometimes under stress, and that it may be viewed from a distance of several metres. The route monitoring display should therefore be planned to present only the immediately relevant information, in a manner that ensures it can be taken in quickly, clearly and without ambiguity.

In particular, text is difficult to read and tends to cause clutter. It should be kept to a minimum on the route monitoring display.

If there is a delay in preparing data for the route monitoring display (e.g. *due to a request for scale change, or look-ahead to another area*) the ECDIS should inform the mariner. The previous display should be maintained, and updated, until the new display is ready for draw.

Because the display screen is smaller than the paper chart, the IMO PS specify that the ECDIS display should have the capacity for local as well as distant look-ahead. To provide this will be an important consideration in presentation design. While, for example, manufacturers may provide a smaller scale look-ahead display by windowing, these Specifications must take into account the fact that important features such as lights, future waypoints, etc., may often lie out of sight off the screen.

2.2.4 Important features should always be clear and conspicuous

These specifications are designed to make important features (e.g. own-ship symbol, own-ship safety contour, etc.) more conspicuous than minor features.

Ergonomic specialists point out that, to avoid ambiguity, important features, such as those in the IMO PS Display Base, should be redundantly coded. (Two examples are the own-ship safety contour, which is a thick line and has a sharp change in the colour of the depth shade, and the planned route, which is red and is the only heavy dotted line on the display). This serves to improve the visibility of important features on the route monitoring display, and it also helps to distinguish features in bright sun or at night.

Chart features should normally be written over the radar image. See section 2.3.2b for details.

2.2.5 Scale and range indicators

The "(indication of) scale and range" required as part of the Display Base by IMO PS Appendix 2 is intended to give the mariner an immediate appreciation of (a) how close to his ship are hazards seen on the display, and (b) how much time he has to decide on any necessary avoiding action. Two indicators should be provided:

- a one-mile scale bar for a large scale display and a ten-mile latitude scale for a small scale display (see section 3.2.3(9) for details).
This indicates roughly how close display features are; the cursor or VRM should be used for exact range measurement,
- an emphasized marker on the course and speed made good vector (see IEC 62288).

2.2.6 Effect of bright sunlight, and the dark night display

It will not be possible to read the ECDIS display if the sun is shining directly onto it. Even diffused bright sunlight on the bridge tends to wash out the colours of the display so that they tend to look grey. The "day" colour table has strong contrast to combat this effect. But it helps to shield the face of the screen.

The face of the display screen acts as a mirror to white shirts, sometimes seriously obscuring the chart display. Wearing a black cotton (not synthetic) watch-coat will greatly improve viewing on a sunlit bridge.

At night several factors combine to reduce colour discrimination:

- *the display must be darkened to a level at which it does not impair the mariner's night vision, hence his ability to keep a look-out,*
- *the ability of the human eye to distinguish colour is reduced at low light levels,*
- *the display screen is less capable of discriminating between colours at low levels. A dark colour may drop below the screen cut-off and become black.*

Note that ships tend to arrive in port at 0800 and sail by 1700, to reduce port charges; thus the critical passage through the port approaches often occurs at night.

The night colour tables are designed to overcome night viewing problems as far as possible, and some other measures are taken as well:

- *important features are distinguished by redundant symbol/linestyle coding as well as colour, (e.g. own-ship is a unique double circle , in heavy white at night),*
- *if it happens that the entire night display area consists of only one depth zone, the mariner will not be able to judge by absolute colour discrimination which of these depth zones the ship is in. A clearly visible "depth less than safety contour" pattern is provided to indicate shallow water (section 3.2.3(15)),*
- *the mariner should be advised to adjust the night display of a display screen by contrast control, not by brightness, which may shift dark colours below cut-off.*

Use of a 0.9 ND optical filter over a relatively bright display is a better solution for night viewing than reducing the display brightness.

2.2.7 Location for the ECDIS display

Experience in sea tests has shown that it is important to select an appropriate location for ECDIS. For example:

- *the navigator should be able to see the display clearly, and to reach the controls, from his normal conning position,*
- *it is an advantage to locate radar and ECDIS side by side,*
- *the face of the display should be shaded from direct sunlight, and the display should not be located where the viewer may find the sun directly behind it.*

2.2.8 Displaying text

The power of ECDIS lies in conveying operational information quickly, clearly and comprehensively through a picture, a birds-eye view of the ship and her surroundings. Text should be avoided on this graphical operational display unless it is absolutely necessary, because it conveys limited information and, since it has to be written large to be readable, causes confusing clutter.

However some text may be unavoidable, both on the operational display (e.g. buoy numbers if these are required for VTS reporting) or on a separate text display (e.g. course to steer, heading; alarms; tidal information; user interaction to control the ECDIS, etc.).

(See also sections 2.3.3c, 3.1.5 and 3.4, and Presentation Library, Part I, section 9.1).

2.2.9 Flashing to draw attention

The capability to flash a symbol should be used only rarely in very special cases. It should be used to draw attention rather than to simulate a real flashing object.

2.2.10 Operator control of information should be effective and simple

In order to handle the diversity of information and flexibility of display options provided by ECDIS without confusion, the presentation of information must be designed carefully. In particular, the operator interface should provide clear, simple control of the display such that there is no danger of confusion, or of failure to retrieve important chart information in a stressful situation.

"Viewing Groups", as an optional way of giving the mariner control over the information on the display, are described in Presentation Library, Part I, section 10.3.4.6.

The mariner should have full control over any automatically linked display changes, including the option to inhibit such changes. Examples of linked display changes include changing the source of data when a larger scale becomes available, or displaying lights automatically when the mariner selects the "Dusk" colour table.

There should be enough commonality between the user interfaces of the various makes of ECDIS that a pilot, or watch officer new to the ship, can use an unfamiliar type of ECDIS. However, over-strict standardisation will hamper development of an effective interface.

2.3 Organising the Information for Display

2.3.1 Display of non-chart information

2.3.1a Distinguishing between chart data and additional data

IMO PS section 1.5 states that ECDIS should enable the mariner to execute the chartwork at present performed on the paper chart and section 3.3 states that the SENc may contain information from other sources than ENC's. This specification requires that ECDIS distinguish between chart data and additional data from users (mariners) and manufacturers. The following colour and symbol usage for mariners and manufacturers data is designed to implement this while ensuring the display remains clear and uncluttered.

Part II of the Presentation Library in Annex A describes a few "Mariner's Navigational Objects" for route planning and route monitoring chartwork, and for adding mariner's and manufacturer's information to the SENC. The descriptions are in the same format as chart objects, in order to avoid the ECDIS having to deal with two differently coded types of data. The colours, symbols, categories and display procedures that apply to all these objects are included in Part I of the Presentation Library, along with the procedures for chart objects.

Mariners may alter the IMO categories for Mariner's Objects (but not for chart objects). Note, however, that IMO PS 11.4.1 requires that own ship and selected planned route should always appear, and should therefore remain in Display Base.

Note that Mariner's Objects should be kept independent of chart data in the SENC, and that mariner's information does not need to be split into cells.

In referring to Mariner's Objects it is important to distinguish between:

"Add/Enter", "Revise" or "Delete" mariner's or manufacturer's information; this refers to the contents of the SENC, and:

"Display" or "Remove" the information; this refers to the ECDIS display.

2.3.1b Mariner's Information on the route monitoring display

In addition to the ability to enter manual chart corrections and to carry out route planning and route monitoring chartwork, the mariner should be provided with the capability of adding at least the following symbols, lines and areas to the SENC, and should be able to revise or delete them:

- .1 the caution "(!)" or information "[i]" symbol section 3.2.3 (6b), (6c), used to call up a note on the text display by cursor picking,
- .2 simple lines and areas with or without colour fill, set up for cursor picking to give an explanatory note in the text display,
- .3 any of the chart symbols in the Presentation Library,
- .4 text notes.

Non-ENC chart information added by the mariner should be in normal chart colours, identified as described in the Presentation Library, Part I, section 10.7.3.

Other information added by the mariner should be distinguished by the colour orange (colour token NINFO) except for colour fill, which should use transparent yellow (colour token ADINF). (*Transparent orange tends to look magenta in colour over blue backgrounds*).

Mariner's information should not overwrite ENC information.

The symbols and instructions for using the IEC "Mariner's Navigational Objects" are given in Part II of the Presentation Library.

2.3.1c Manufacturer's Information on the route monitoring display

- 1 If the manufacturer should add non-chart information to the SENC, he should use the following symbols, lines and areas:
 - (i) the circled "!" caution symbol SY(CHINFO11), or boxed "i" information

symbol SY(CHINFO10), used to call up a note on the alphanumeric display by cursor picking,

- (ii) simple lines, or areas without colour fill, set up for cursor picking to give an explanatory note in the alphanumeric display (colour fill should not be used).
- (iii) Non-chart information entered by the manufacturer should be distinguished by the colour yellow (colour token ADINF). It should not overwrite HO ENC information.

2 If the manufacturer should add non-HO (non- ENC) chart information to the SENC it should be symbolised in the same way as HO chart information and distinguished from HO chart information as described for the various cases below:

- (i) Limited non-HO data is added to existing HO data to augment the chart information. Each object should be marked by the special identifiers described in the Presentation Library, Part I, section 10.7.3.
- (ii) An area of non-HO data is located in waters for which HO chart data exists; it is superimposed on the HO data. In some cases the non-HO data may be more appropriate for the intended purpose, for example it may be more detailed.

In this situation it is at the mariner's discretion whether to use the HO or the non-HO data.

If the mariner selects the non-HO data, the boundary of this data should be identified on the ECDIS display by the line LC(NONHODAT) and the warning "Unofficial data displayed; refer to official RNC or paper chart" should be displayed.

Note that the LC(NONHODAT) is a "one-sided line", and the boundary of the area of non-HO data must be drawn according to S-57 rules to ensure that the diagonal stroke of the line is on the non-HO data side of the line. More details are given in the Presentation Library, Part I, section 10.1.7 and in section 2 of the Addendum to Part I.

- (iii) An area of non-HO data is located wholly outside the area covered by HO data (although it may share a boundary with the HO data) but is shown on the same display as HO data. The non-HO data should be bounded by the line LC(NONHODAT) and the warning "Unofficial data displayed; refer to official RNC or paper chart." should be displayed.
- (iv) The entire display contains nothing but non-HO data. The warning "No official data available; refer to official RNC or paper chart." should be displayed. In this case, special identifiers need not be used."

3 The mariner should be able to remove all manufacturer's information if the need should arise.

2.3.1d Displaying the radar image

The radar image may be displayed by an opaque overlay or a transparent overlay, using colour tokens RADHI and RADLO. Further details are given in section 4.2.7.

2.3.1e Displaying pick reports

The following information should be shown on demand on the same screen as the chart display or on an additional graphic or text display:

- Positional data and time;
- legend;
- object description and associated attributes (result of "cursor query") in human readable language, including the meaning given in the Presentation Library for any symbol selected by cursor-pick; textual information from ENC, e.g. cell name, compilation date, date of issue;
- record of ENC-updates;
- ECDIS Chart 1;
- colour differentiation diagram;
- black adjust symbol for contrast adjustment;
- list of categories which are removed from Standard Display;
- Edition number of Presentation Library in use.

2.3.1f Units

There should be no ambiguity about the units in use at a particular time. The units listed below should be indicated in the display legend:

- (1) Position: latitude and longitude in degrees, minutes and decimal minutes.
- (2) Depth: metres and decimetres.
- (3) Height: metres.
- (4) Distance: nautical miles and decimal miles, or metres.
- (5) Speed: knots and decimal knots.

2.3.1g Legend

A standard legend of general information relating to the area displayed, applicable to the position selected by the mariner, should be shown on a graphic or text display. This legend should contain at minimum:

- (1) units for depth
- (2) units for height
- (3) scale of display; in addition overscale indication where appropriate
- (4) data quality indicator
- (5) sounding/vertical datum
- (6) horizontal datum

- (7) the value of the safety depth if used
- (8) the value of the safety contour selected by the mariner, as well as the value of the safety contour displayed (which may be different from that selected by the mariner)
- (9) magnetic variation
- (10) date and number of last update affecting the chart cells currently in use
- (11) edition number and date of issue of the ENC
- (12) chart projection

2.3.2 Priority of information

2.3.2a Priority layers

The IMO PS divides SENC information into three categories that determine what data is to be on the display: Display Base (always present on the display); Standard Display (the default display); and Other Information (displayed on demand). (IMO PS section 3 and Appendix 2). (See section 2.3.3a).

There are 10 priority layers for the drawing sequence of the data on the display:

- (1) ECDIS visual alarms/indications (e.g. caution, overscale)
- (2) HO-data: points/lines and areas + official updates
- (3) NtMs, manual input and Radio Navigational Warnings
- (4) HO-caution (ENC cautions)
- (5) HO-colour-fill area data
- (6) HO's on demand data
- (7) Radar information
- (8) Mariner's data: points/lines and areas
- (9) Manufacturer's data: points/lines and areas
- (10) Mariner's colour-fill area data

This list is not intended to indicate a drawing sequence, but to specify that the information content of category n+1 must not obscure the information content of category n, or any higher category (i.e. n-1 etc.).

Category (7) should have a radar off switch to facilitate its removal.

The look-up tables and conditional procedures of the Presentation Library assign a category, and a display priority (drawing sequence), to every object (object class-attribute combination) in the ENC.

2.3.2b Radar priority

The priority of HO chart data over radar is carried out by the single action "remove radar" control (IMO PS 7.2). When present, the radar data is always written over the eight opaque area fills (see 3.1.2). Chart line and point features should normally be written over the radar image, with some exceptions, as described in the "over-radar" field of the Presentation Library look-up table. But in order to meet the requirements of IMO PS 11.4.14 to adjust the ship's position, the ECDIS may incorporate the capability of changing the radar priority of the Presentation Library. Operation of this feature should be clearly indicated.

2.3.3 Display categories

2.3.3a IMO categories

The IMO "Standard Display" provides a starting point. It is a list of objects that the mariner may either add further objects to, or remove objects (except Display Base) from, in deciding what is to be displayed. Note that as soon as any object on this list is removed from the display, or any object not on this list is added to the display, the display no longer shows the IMO "Standard Display".

The IMO "Display Base" is that part of the Standard Display that should never be removed. It is a list of basic objects which the IMO consider are required at all times, in all geographic areas and under all circumstances. Note that the IMO do not intend the Display Base to be sufficient for safe navigation on its own; therefore it should not be a display option to "Show Display Base" without any additions.

The IMO category "Other Information" contains every object in the SENC which is not classed as "Standard Display".

The mariner should be able to remove information selectively from "Standard Display", except that he cannot remove any object of the "Display Base". And he should be able to add selectively to the Standard Display any items of the "Other" category.

Field 6 of the look-up table of the Presentation Library assigns the IMO category in detail to every object in the SENC, including Mariner's Navigational Objects. The mariner may override the category for mariner's objects, but not for chart objects.

2.3.3b Selecting objects for the route monitoring display

Section 5.5 of the IMO Performance Standard requires that "It should be easy to add or remove information from the ECDIS display". For example, the mariner might want to retain "caution areas" from the Standard Display (see Table 4 of this document) but remove the remaining thirteen areas, including such as protected areas (e.g. "game preserve"). Another example is that he might want to add soundings from "Other", but omit submarine cables (which cause serious clutter at certain ocean terminals).

As an aid to adding and removing information from the display, field 7 of the look-up table also assigns every feature in the SENC to a viewing set, and these sets are arranged in groups of ten which are related to the lettered groups of INT 1 for the paper chart, a classification which is familiar to the mariner. The details are given in the Presentation Library, Part I, section 10.3.4.6 and Table 14.2.

The manufacturer is responsible for organising SENC features, viewing sets and viewing groups for display in such a way that the mariner has reasonable flexibility in selecting what he sees without the selection process becoming too complex. Note that it is not necessary to provide access to each feature, viewing set or even viewing group individually.

Note that combined groups which include features from different IMO categories should not be linked permanently, since doing so would, in effect, drag additional features into the Display Base or Standard Display. For example, if a combined group includes soundings (which are "Other") and lights (which are "Standard Display"), this link should not cause soundings to be shown with the Standard Display on first switching on the ECDIS.

2.3.3c Selecting text for the route monitoring display

The ECDIS manufacturer should provide the mariner with control over the selection and display of text on the route monitoring display.

Text should not appear automatically whenever the object it is associated with appears on the display. It should always be possible to remove text independently of the object. The IMO Display Category for text is "other".

As a guide to adding and removing text from the display, the Presentation Library distinguishes between "Important text" and "Other text." Suggested groupings for text display are provided in the Presentation Library, Part I, section 9.1 and Table 14.4.

Section 3.4 of this document gives further details on text.

2.3.3d Linkages in selecting mariner's options

Many other options are available to the mariner in addition to those discussed above. Although these may at first be confusing, linkages which reduce these options but which also reduce the performance of the ECDIS should not be used. For example:

- lights should not be automatically displayed when the night colour table is selected. (*Lights cause clutter and under certain circumstances the mariner may not want them on the display.*)
- as stated in section 3.1.1, symbolized area boundaries should not be automatically selected when paper chart point symbols are selected. (*Symbolized area boundaries are needed for large scale displays showing a number of overlapping areas, whereas the selection of paper chart point symbols is a personal preference and is independent of display scale.*)

Because vessels vary widely in their requirements and their operational procedures, linkages between options which reduce the flexibility of the ECDIS should be avoided.

2.3.4 Displaying ECDIS updates

For guidance on updating the ENC, see Appendix 1. This section deals with how updates should be displayed. It is keyed to the relevant sections of the IMO PS.

- IMO PS 4.5 Automatic and semi-automatic updates: these should be displayed in the same manner as ENC information, using standard colours and symbols.
- IMO PS 4.6 Manual updates: these should be displayed in standard colours and symbols and distinguished as described in the Presentation Library, Part I, section 10.7.
- IMO PS 4.8 The mariner should be able to display updates for review as follows:
- For automatic updates: the manufacturer should provide a means of distinguishing these. *One method suggested is to identify automatic updates temporarily in the same manner as manual updates. The temporary switch-on/switch-off of the identifiers would distinguish automatic from manual updates.*
- For manual updates: display all SENC information. The manual updates should be distinguishable as described in the Presentation Library, Part I, section 10.7.

3 SPECIFICATIONS FOR SYMBOLISING AREAS, LINES & POINTS AND FOR TEXT

3.1 General

3.1.1 Mariner's options in symbols and linestyles

Although buoys and beacons are aids to navigation, they may also become a collision hazard if their presence is not noticed. The Presentation Library therefore provides, as a mariner's option, an alternative set of symbols for buoys and beacons which are more prominent than the paper chart symbols, particularly on the night display. Two look-up tables are provided, to display either simplified or paper-chart type buoy and beacon symbols.

Areas are difficult to symbolise on an ECDIS, for reasons given below. The Presentation Library therefore provides, as a mariner's option, symbolised area boundary linestyles for use on large scale displays. These make the areas easier to figure out than the plain linestyles recommended for small scale displays, where symbolised lines would cause clutter. Two look-up tables are provided, to display either symbolised or plain area boundary linestyles.

The mariner should be given the option of selecting the buoy symbols and area boundary linestyles that best fit the situation, without linkages. For example, boundary linestyle should be selectable independent of the choice of buoy symbol, and independent of the actual display scale.

3.1.2 Areas

The moving display window of ECDIS, coupled with the possibility of the mariner using a large scale (small area) display window that could lie wholly within a given area, so that the border is not visible, give problems in symbolising.

Areas can be identified both by symbolising the area itself and by symbolising its boundary.

The mariner has to be made aware of any important area, and its identity, but the symbolising should not cause clutter.

3.1.2.1 The following methods of symbolising the area are used:

- 1 Opaque colour fill: depth areas and land areas. These consist of (with colour token):

<i>deep water, and also user interface - background</i>	<i>(DEPDW & UIBCK)</i>
<i>medium deep water</i>	<i>(DEPMD)</i>
<i>medium shallow</i>	<i>(DEPMS)</i>
<i>very shallow</i>	<i>(DEPVS)</i>
<i>intertidal area</i>	<i>(DEPIT)</i>
<i>land in general</i>	<i>(LANDA)</i>
<i>built-up areas</i>	<i>(CHBRN)</i>
<i>no chart data</i>	<i>(NODTA)</i>

Eight colours are used, which matches 8-bit graphics devices. They form a subdued background giving maximum contrast to foreground information, including the radar image, all of which are drawn on top.

- 2 Semi-transparent colour fill: Depth zones should show through this, and all other information is drawn on top, e.g.:
 - traffic separation zone and mariner's chartwork area fill.
- 3 Patterns of lines: for important area features in busy waters; the pattern should not be distracting, e.g.:
 - traffic junctions - closely spaced magenta diagonal lines - AP(TSSJCT 02),
 - grossly overscale part of chart display compiled from two compilation scales - faint grey vertical lines - AP(OVERSC 01)
- 4 Continuous textures: need to show up in small areas; may be used for features in busy waters and so should not be distracting, e.g.:
 - area with no data - AP(NODATA 03),
 - dredged area - ordered dot pattern, AP(DRGARE 01),
 - ice area - random short lines, AP(ICEARE 04).
- 5 Patterns of symbols: used in less busy areas, or displayed temporarily and then removed, so can be more distracting, e.g.:
 - aquaculture - AP(MARCUL 02)
 - quality of bathymetry - AP(DQUAL 11)
- 6 Single centred symbol: used for important features in busy waters, such as traffic lanes, restricted areas. The symbol is large to give it visibility, but faint in colour to reduce clutter, e.g.:
 - traffic lane - SY(TSSLPT 51)
 - anchorage prohibited or restricted - SY(ACHRES 51)

These artificial areas are difficult to symbolise because one symbol must apply to all sizes, for example from the case when the display window is wholly inside a traffic lane, to an "area to be avoided" the size of a postage stamp on the display.

In addition, some areas such as traffic routeing systems often have multiple conditions (e.g. "traffic direction" + "deep water route" + "entry restricted"). Many of the symbols in the Presentation Library have deliberate offsets from the pivot point to avoid overwriting.

The Presentation Library provides large transparent symbols for centred symbols and small symbols for pattern coverage:

- (a) Centred symbols are used where it is important to avoid clutter, particularly in traffic lanes. The symbol must be placed within the area. See Presentation Library 8.4 for one method of centring a symbol.
- (b) (i) For a pattern of small symbols, the spacing between the symbols lies within the limits:
 - minimum distance apart: 2 cm.
 - maximum distance apart: 10 cm.
- (ii) It would be ideal to space the symbols further apart for a large area and closer together for a smaller area. However reliable symbolising is more important, and a constant fixed-space symbol pattern should be used until "scale dependent spacing" has been developed and proved. See the ENC Symbol Catalogue in the Presentation Library Addendum.

- (iii) While a good-looking solution is desirable, identification without clutter is more important. Pattern symbols need not line up exactly between cells; and they need not stay in the same geographic position on re-draw.
- (c) It should always be possible to identify an area by cursor picking on any point within the area.
- (d) If the ECDIS offers a ship-centred display mode, the manufacturer should avoid overwriting between the ship symbol and a centred symbol for an area which wholly encloses the display (for example, the traffic direction arrow (TSSLPT) in a very large traffic lane such as Dover Strait).

3.1.2.2 Symbolising the area boundary:

- 1 Discussion: on a large scale display of busy waters the boundaries of many areas may appear without the whole of each area being on the display. While the centred symbols will be there, it will often be difficult to know which area they apply to. It may also be difficult to decide which side of a particular boundary line is the inside of the area.

To help clarify this situation, the Presentation Library includes two area look-up tables: (i) the "symbolised area boundaries" table, using symbolised and "one-sided" versions of the boundary lines of important areas. This is for use at large scale as a mariner-optional alternative to (ii) the "plain area boundaries" table, which uses simple linestyle area boundaries. This will normally be preferred at smaller scales to avoid clutter.

- 2 Symbolised complex linestyles: to identify the area, symbols (or letters acting as symbols) are embedded in the line, e.g.:
anchoring prohibited or restricted - LC(ACHRES 51)
deep water route - LC(DWRUTE 51)
- 3 One-sided complex linestyles: to identify the side of the boundary line on which the area lies, restricted areas use the traditional "T" linestyle of the paper chart, e.g.:
entry prohibited or restricted - LC(ENTRES 51).

Other important areas use a boundary linestyle like the cold front on a weather map, e.g.:

waiting area - LC(CTYARE 51)
fairway - LC(NAVARE 51)

- 4 Simple linestyles: dashed lines are generally used for area boundaries. In ECDIS, the dotted line is reserved for the danger line around foul areas, etc.
- 5 Colours: the colour magenta is used for important areas, grey for less important areas, e.g.:
traffic areas, caution areas - magenta
harbour limits - grey

3.1.3 Symbol Specifications: Presentation Library

All symbols are specified in the S-52 ENC Symbol Catalogue in the Presentation Library Addendum.

Some object classes do not have a symbol (e.g. territorial sea). Such "no symbol" objects may be picked up by cursor interrogation of the area.

Should an "unknown object" occur in the SENC which is not adequately defined or for which no symbol exists, its presence should be indicated on the display by a magenta "?" SY(QUESMRK1) with the IMO category "Standard Display".

Some objects are symbolised differently depending on circumstances (for example the symbol for a contour depends on whether it is the safety contour.) The Presentation Library includes conditional symbology procedure diagrams for features whose symbols cannot be supplied by a fixed look-up table. Some of these procedures are unavoidably complex, and they should be evaluated carefully.

3.1.4 Paper chart INT 1 and ECDIS Chart 1

IHO INT 1 for paper charts is both the starting point for the new simplified symbols and the check-list for paper-chart type symbols on the ECDIS. The new symbols simplify the paper chart symbols where operationally proved necessary, to improve readability and drawing speed on the display; they also symbolise new features introduced for ECDIS, such as the Daymark.

Section 16 of the Presentation Library includes an ECDIS chart 1, a graphical index of ECDIS symbols including both simplified and paper-chart point symbols, and also the symbolized lines and area boundary linestyles. This is intended to familiarize the mariner with the colour and symbol coding used by the ECDIS. The symbols are grouped according to INT1, which is familiar to the mariner, but are numbered with a look-up sheet, not labelled. A digital version of ECDIS Chart 1 is part of the PresLib; the manufacturer should provide linking by cursor interrogation between the symbols and the explanations given in the symbol library.

The ECDIS Chart 1 is intended for use off-line and in route planning. It is not needed during route monitoring, when the mariner can use cursor enquiry to find the meaning of symbols.

Technical details of the digital ECDIS Chart 1 are given in the Presentation Library, Part I, sections 17.7 and 18.2.

3.1.5 Size of lines, symbols and text; fonts

Lines and symbols and text should be large enough that they can be easily interpreted at the operational viewing distance. This will be about 70 cm for route planning, but experience to date indicates that the viewing distance for important features during route monitoring may be several metres.

Human factors experts quote a minimum requirement that symbols and characters subtend 20 arc minutes at the observers eye (for example, a symbol viewed from 70 cm for route planning should be about 4mm in size, 1.5 times the size of a normal chart symbol. Two times chart size is a good general rule.). Symbols and characters important for route monitoring may have to be significantly bigger.

For clear representation, symbols require a minimum number of screen units (pixels), depending on their complexity. A simple chart symbol should extend about 12 pixels (that is about 4 mm for an IHO standard screen).

The minimum sizes for all symbols should be as shown in the Presentation Library.

In addition, the symbols should always be drawn with at least the same number of pixels as are required to draw the symbol at the size defined in the Library for the minimum resolution and minimum chart display area (270 x 270 mm). *That is, the minimum height in pixels of a symbol is: (symbol height in mm) divided by 0.312 mm (where 0.312 mm is the "pixel size" for the minimum size chart display in Section 5.1 – Physical Display Requirements).*

When the display scale is enlarged by zooming in, it should be possible to hold symbol size constant. The same applies to text. Symbol and text size should never be decreased when zooming out.

The text on the ECDIS should be readable from 1 metre.* Sans serif, non-italic fonts should be used. The computer ø should not be used.

Because several appropriate commercial fonts are available, the Presentation Library does not specify alphanumerics, except for soundings. The manufacturer should make his own arrangements for the use of a font. A plain, clearly readable font such as Univers should be used. In most fonts, pica 8 is too small to read.

**IEC 60945 specifies that character size in mm be not less than 3.5 x the viewing distance in metres. Hence "readable from 1 metre" requires that characters be not less than 3.5 mm in size.*

3.1.6 Display Orientation

It should always be possible to display the chart north-up (IMO PS section 8.1), but other orientations are allowed. *(Human factors specialists point out that course-up orientation offers some safety advantages, and operational reports support this)*

Symbols and text should always be drawn screen-up, no matter what the orientation of the screen may be. Symbols which include "rotate" in the symbology instruction (e.g. light flares) should be rotated with respect to the top of the screen. However symbols that are oriented according to an S-57 attribute such as ORIENT should be oriented with respect to true north. Further details are given in the Presentation Library, Part I, section 9.2.

If the display is oriented course-up, the orientation should not be altered too frequently, in order to avoid jitter from frequent rewriting of chart information.

The north arrow is always required on the display, as part of the IMO Performance Standards Display Base.

3.1.7 ENC scale: Graphical Index of ENC's by Navigational Purpose: Limit of HO data

1 ENC scale. The compilation scale of the ENC is the scale at which the ENC was designed to be displayed. It may not be the same as the scale of the source data. As required by IMO Performance Standards, section 6.1.1, an overscale indication should be shown whenever the mariner selects a display scale that is larger than the compilation scale. See Presentation Library, Part I, section 10.1.10 for details.

- 2 Automatic overscale at a scale boundary. Where ENC's of different navigational purpose overlap, the ECDIS display of the overlap area should show two "chart compilation scale boundaries", at the beginning and end of the overlap. Beyond one boundary the part of the display taken from the smaller scale ENC will often be grossly overscale. (See section 3.2.3 8(b))

Only the major changes in compilation scale resulting from a change in "navigational purpose" should be shown as scale boundaries on the display. Small changes in compilation scale within a navigational purpose should not be shown.

The Presentation Library, Part I, section 10.1.10, specifies how the scale boundaries and the overscale area should be symbolised.

When the display cannot be completely covered with ENC data for the selected navigational purpose, the remaining part of the display should be filled with data based on a more general navigational purpose (if available).

- 3 Graphical Index of ENC's by Navigational Purpose. Without cursor enquiry of the chart area it will not always be clear what compilation scale applies to a given part of a mixed source display. S-52 requires a graphical index of the navigational purpose of the data to clarify the situation. This is also needed for route planning.
- 4 Limit of HO data. The end of HO chart data on this graphical index defines the limit of HO ENC coverage. Details are given in the Presentation Library, Part 1, section 10.1.7.

3.1.8 Chart data quality indicator

A bathymetric data quality indicator by zones of confidence (M_QUAL CATZOC) will cover the entire area of depth data or bathymetry for the ENC (although not all data will be assessed initially). The table of "CATZOC" values giving the meaning of each zone of confidence should be readily available to the mariner.

3.1.9 Cursor enquiry

It should be possible to call up any of the information associated with an object by cursor enquiry on its symbol. This should extend to areas (restricted area, depth area, etc.) and to "no symbol" areas (territorial seas, etc.) and meta-areas (information about the area such as compilation scale, etc.). The search for area information needs to extend only to the cell boundaries enclosing the position of the cursor.

See Presentation Library, Part I, section 10.8 for further discussion.

3.2 **New Symbols for ECDIS**

(These are illustrated in the ECDIS Chart 1, provided in the Presentation Library).

3.2.1 Types of new symbols

Four types of new symbols have been introduced for ECDIS:

- (1) Special ECDIS chart symbols to identify unsafe depths, such as the safety contour, safety depth, isolated dangers etc.
- (2) Optional simplified chart symbols for buoys and beacons, and symbolized area boundary linestyles.

Since buoys and beacons are a potential hazard as well as an aid to navigation, simplified buoy and beacon symbols have been designed which are more compact and more prominent than the paper chart symbols, particularly at night.

On a large scale display, the boundary lines of areas can become confusing; symbolised area boundaries have been designed which identify the type of area involved and also indicate on which side of the boundary line the area lies.

The ECDIS should provide the mariner with the option of using either the traditional paper chart buoy and beacon symbols or the new simplified symbols, and either the symbolized or the plain area boundary linestyles, as best fits his purpose. The symbol tables of the Presentation Library are organised to facilitate these options.

- (3) New chart symbols, such as north arrow, scale boundary, depth area less than safety contour, etc., needed to explain the more flexible, electronic display based, presentation of ECDIS.
- (4) IEC Mariner's Navigational Elements developed by IEC for IMO, which include the important planned route and own ship symbols. *The authority for these features is IEC Standard 61174 and IEC 62288. A few of them are included in Part II of the Presentation Library for convenient reference by agreement with the IEC. They are described by objects and attributes in the same manner as chart features so that only one symbolising routine is required.*

3.2.2 Special ECDIS chart symbols to identify unsafe depths

The ECDIS highlights in new ways four features that are important for safe navigation. These are the safety contour, depth shades, the safety depth and isolated dangers:

- (1) The own-ship safety contour, selected by the mariner from among the contours in the SENC, is double-coded by a thick line and a prominent change in depth shade.

If the safety contour selected by the mariner is not available in the SENC, the ECDIS should default to next deeper contour and inform the mariner. If, when the ship moves onto a new chart, the safety contour previously in use is no longer available, the ECDIS should again select the next deeper contour, and inform the mariner.

If the mariner does not select a safety contour, the value should default to 30 m.

See Presentation Library, Part I, section 13.2.2 conditional procedure DEPCNTnn for details.

- (2) Depth zone shades, defined by the safety contour and selected shallow and deep contours and the drying line.

The safety contour defines two depth zone shades and the drying line a third:

deep water:	deeper than the safety contour (colour token DEPDW),
shallow water:	shallower than the safety contour (colour token DEPVS),
intertidal area:	area exposed at low water (colour token DEPIT).

These are the only three depth shades that can be clearly distinguished on the night display, and they can only be distinguished by contrast, when seen on the display together. If, at night, the entire display consists of shallow water, the mariner will not be able to recognise this dangerous situation. Therefore, a "depth less than safety contour" pattern is provided in the Presentation Library to reinforce the depth shade. It is optional for the manufacturer to provide this feature, but its inclusion is strongly recommended as a safety feature.

The mariner should be given the option of whether to use this pattern, by night or by day (although it is not strictly necessary by day when the shallow water can be clearly identified by the difference in depth shade). This mariner's option is built into conditional symbology procedure "SEABEDnn". See Presentation Library, Part I, sections 10.5.7 and 13.2.14.

It is recommended that the ECDIS should also allow the mariner the option of selecting a deep contour and a shallow contour from among the contours in the SENC, thus establishing the following five depth zones:

deep water:	deeper than the deep contour (colour token DEPDW),
medium-deep water:	depths between the deep contour and the safety contour (DEPMD),
medium-shallow:	depths between the safety contour and the shallow contour (DEPMS),
very shallow water:	depths between the shallow contour and zero metre contour (DEPVS)
drying foreshore:	intertidal area (DEPIT)

The following depth zones may be used as default values:

<i>deep water:</i>	<i>deeper than 30 m (deep draught vessels)</i>
<i>medium deep:</i>	<i>own-ship safety contour to 30 m</i>
<i>medium shallow:</i>	<i>2 m to the own-ship safety contour</i>
<i>very shallow:</i>	<i>0 to 2 m (defines waters accessible to small craft)</i>
<i>intertidal:</i>	<i>exposed at low water</i>

- (3) The own-ship safety depth is intended as an aid when no appropriate safety contour is available in the SENC. Soundings equal to or less than the safety depth selected by the mariner are made more conspicuous than deeper soundings. A separate set of sounding figures is provided in the Presentation Library.

- (4) Isolated dangers (small shoals, rocks, wrecks, obstructions) of depth equal to or less than the safety contour, and also lying within the 'safe' water defined by the safety contour, are highlighted by a special symbol. Because the mariner may sometimes have to navigate in water shallower than a default safety contour, the mariner may also select to show isolated dangers in the 'unsafe' water between the displayed safety contour and the zero metre contour.

Instructions for these four procedures are given in the Presentation Library, Part I, section 13, "Conditional Symbology Procedures."

3.2.3 Other new and simplified ECDIS symbols and their use

Other new chart symbols required by the difference in purpose between ECDIS and the paper chart, as well as the difference between paper and electronic presentation, are described below.

Note that all simplified point symbols are centred on the position of the feature.

(1) Simplified buoy symbols.

Sloping topmark symbols are used for lateral, cardinal, isolated danger and safe water buoys. They are coloured in the single most distinctive colour of the buoy (mixed colours in a small buoy symbol look faint on the night display). Special mark buoys are filled yellow circles, and all mooring buoys resemble the paper chart "installation buoy". The default buoy, used when a buoy is not fully described in the ENC or has no specific symbol in the Presentation Library, is a filled grey circle.

All symbols are centred on the position of the buoy.

When the name or number of the buoy is displayed, it is prefixed "By" by the Presentation Library, since otherwise a number can be mistaken for a sounding.

Note 1: this way of displaying buoys is designed primarily to show clearly that a buoy is there, both to avoid collision with the buoy and as an aid to navigation. The details of buoy characteristics, which cause clutter and are difficult to show clearly on an electronic display under all bridge lighting conditions, should be provided by text command or by individual cursor interrogation.

Note 2: green radar on green buoys or light flares does not contrast well, hence buoys and light flares are written over the radar and all light flares are surrounded by a black outline.

(2) Simplified beacon symbols.

Upright topmark symbols are used for cardinal and isolated danger beacons. Lateral beacons, safe water beacons and special mark beacons are drawn as specific symbols for minor beacons, general beacons, and beacon towers. Beacons are shown in the same colour as buoys, except for the safe water beacon which is black (white at night). The default beacon is a grey general beacon symbol.

All symbols are centred on the position of the beacon.

When the name or number of a beacon is displayed, it is prefixed "Bn".

(3) General symbol for isolated underwater danger.

This conspicuous magenta symbol is applied automatically to rocks, wrecks, small shoals, etc., of depth equal to or less than the own-ship safety contour and which are in deeper water than the safety contour. Optionally, the mariner may extend displaying isolated dangers to shallow waters between the safety contour and the zero metre contour, in case he is forced by circumstances to navigate in such waters.

(4) The dredged area is shown by a grey dotted area fill pattern.

(5) Radar conspicuous coastline.

This includes cliffs and abrupt coastlines that can be expected to return a strong radar echo consistently from the same part of the feature. The magenta highlight line is only used if the coastline is identified as "radar conspicuous" in the ENC.

(6) Prohibitions, cautions and information notes are symbolized with small symbols for point application and with large centred symbols for areas, as illustrated in screens (AB), (JKL) and (MN) of the ECDIS Chart 1. Multiple symbols are used when necessary to convey more than one restriction.

Regulated areas are divided for symbolization into Cautionary Areas (including the existing caution area) and Information Areas, following the distinction established by the IMO/IHO Harmonisation Group on ECDIS in 1992. (See Table 4 of this document).

Point cautions and notes entered by the mariner and the manufacturer are distinguished by the colours orange and yellow respectively.

(7) Unknown object.

A magenta "?" marks the position of an object which cannot be identified or for which there is no entry in the Presentation Library look-up table.

(8a) Scale boundary.

This shows where the compilation scale of the chart data available changes. The ECDIS should warn the mariner of upcoming chart scale change. Only the major changes in compilation scale resulting from a change in "navigational purpose" should be shown. Small changes in compilation scale within a navigational purpose should not be shown. See Presentation Library, Part I, section 10.1.10 for details.

(8b) Overscale area at scale boundary.

All the chart data on the display must be shown at the same scale. In order to avoid leaving part of the display blank, the chart display may extend beyond the edge of a relatively large scale ENC to include information from an adjoining smaller scale ENC, which may be from a different "navigational purpose". The smaller scale data will normally be enlarged to

match the larger scale ENC, and in this case the "overscale area" symbol should be used to identify any part of the chart display shown at two or more times the compilation scale. See Presentation Library, Part I, section 10.1.10.2 for details.

Note that this symbol applies only to the automatic overscaling performed by the ECDIS in matching ENCs at different compilation scales. It should not be applied to an overscale display deliberately requested by the mariner, which should trigger the overscale indication required by IMO Performance Standard section 6.1.1.

(8c) Change of units of depth. (*This section is deleted*)

(8d) Change of horizontal (geodetic) datum.

The use of non-WGS 84 ENC data does not comply with IHO S-57, and the boundary at which the local geodetic datum changes is not symbolized by the Presentation Library.

The ENC may include information on the relation between the local geodetic datum and WGS 84 (M_HDAT, HORDAT), but this is intended for use in converting local data to WGS 84 for use in the SENC, should the need arise.

(9) Scale bar or latitude scale.

The IMO PS require an indication of scale and range as part of the Display Base. The display scale decides which should be used:

- (a) for display scales larger than 1/80,000: always display the 1 mile scale bar provided in the Presentation Library
- (b) for display scales at 1/80,000 or smaller: always display the 10 mile latitude scale provided in the Presentation Library.

The scale bar or latitude scale should always be drawn vertically at the left side of the chart display, just clear of the border of the display.

The mariner should be able to remove any labels on the scales to avoid clutter.

"Display Scale" is defined as: [distance between two features on the display] / [distance between the same two features on the earth's surface]. This means that 1/75,000 is a larger scale than 1/80,000.

(10) North arrow.

The IMO PS requires a north arrow as part of the Display Base. The north arrow should always be shown at the top left corner of the chart display, just clear of the scale bar or latitude scale.

(11) Manual chart correction.

Small orange identifiers are used to distinguish hand-entered chart corrections, which are subject to human error, from corrections entered automatically by electronic means. The original chart object should not be

removed or altered. (See 2.3.4 for details).

(12) Ramark, Racon.

This is introduced to distinguish beacons that will appear on the radar display from other radio-beacons.

(13) Data from non-HO sources

The non-HO data boundary LC(NONHODAT) serves to separate ENC data from non-HO chart information. See section 2.3.1c for further details on identifying non-HO data.

(14) No data areas.

The first action of the ECDIS display re-draw should be to cover the entire screen with the NODTA area colour fill and the AP(NODATA03) area pattern. These will remain to identify any area not subsequently covered by chart information as a no data area.

(15) Identifying pattern for depth areas less than the safety contour.

(this section is covered by section 3.2.2 (2))

(16a) Identifying pattern for traffic junctions, crossings and roundabouts.

A pattern of diagonal magenta lines is used to identify the areas of a traffic separation scheme which are traffic junctions, crossings or roundabouts, or precautionary areas.

(16b) Traffic routeing and regulated areas in general.

New centred symbols are provided in the Presentation Library, to avoid the clutter caused by a pattern of symbols in these often critical waters. Details are given on screens (JKL). (M) and (N) of the ECDIS Chart 1.

(17) Glacier or ice shelf.

A random pattern of short lines symbolising "candled" ice is provided to indicate a glacier or area of shore-fast ice.

(18) Daymark.

The daymark symbols are designed so that they can be over-written on a beacon which is highlighted by a daymark.

(19) Paper chart symbols for an opening bridge and a radar reflector on an overhead cable have been revised to fit any orientation of the bridge or cable - see ECDIS Chart 1.

(20) A one-sided linestyle is provided for use on large-scale displays to indicate the side of an area boundary on which the area lies, when only a part of the boundary can be seen on the display.

(21) Meta-data (information about the chart data), such as chart data confidence areas.

The "zones of confidence" in the chart data (section 3.1.8) are symbolised by a system of stars. Other meta-data items, including compilation scale, IALA "A" or "B" buoyage, etc., are left to cursor picking.

(22) Special identifiers.

In addition to the manual chart correction identifier of para. (11) above, identifiers are provided for low accuracy chart data and for ENC objects which have additional information for cursor picking under the "INFORM" attribute. The latter may cause clutter, and should only be displayed temporarily. Identifiers are shown on screen (AB) of the ECDIS Chart 1.

(23) IEC symbols.

By agreement with the IEC, symbols for the "Navigational Elements and Parameters" of the IMO PS Appendix 3, and also symbols being developed by IMO for AIS vessel reports, are included in the Presentation Library. These are on the last diagram of the ECDIS Chart 1.

3.3 Existing Chart Symbols

3.3.1 Reproduction of paper chart symbols on ECDIS

Most of the symbols in IHO INT 1 "Symbols used on (paper) charts" have been translated for use on ECDIS. The ECDIS Chart 1 gives details, and is divided into lettered sections in the same way as INT 1.

The following notes apply to these symbols:

- (1) Depth contours are not labelled by the ECDIS. The Safety Contour is highlighted, and the mariner should use cursor picking for other contour values.
- (2) Light sectors. It should be possible, on request, for the mariner to be capable of identifying the colour of the sectors affecting the ship, even if the lights involved are off the display.

3.4 Text, Diagrams etc.

3.4.1 Text as part of the route monitoring display

Text information should be used on the route monitoring display only when unavoidable, since it has to be written large to be readable and so causes clutter.

Details of displaying text are given in 3.1.5 and in the Presentation Library.

Soundings are treated by the Presentation Library as symbols to ensure they are legible and correctly located.

3.4.2 Text windows, explanatory diagrams etc. superimposed on the route monitoring display

The 270 mm by 270 mm minimum area of chart presentation for route monitoring should normally be used for chart and navigation information alone.

Any windows containing text, diagrams, etc. superimposed on the route monitoring display should be temporary, and should not obscure important chart or navigational information. Such windows should use only the "User Interface" colours from the Presentation Library. It should be possible for the mariner to re-locate a window in a less important part of the display, such as on land, or behind the ship.

3.4.3 Separate text panel on the same screen as the route monitoring display

A Mariner's Information Panel, consisting mainly of text (alphanumerics), might include:

- *ECDIS alarms and indications, e.g. "crossing safety contour",*
- *navigation information, e.g. time, position, course to make good, etc.,*
- *chart information, e.g. contour selected for own-ship safety contour,*
- *supplementary chart information, e.g. tide tables, sailing directions,*
- *interface dialogue, e.g. "change to night colour table".*
- *etc.*

Sea experience has shown that the text panel on the route monitoring display may have a prominence out of proportion to its significance to safety of navigation. This is particularly damaging to ECDIS performance at night, when the strictly dimmed chart display, which carries nearly all of the information of importance to navigation, may be overwhelmed by the light emitted from large, bold or bright characters on the text display, some conveying relatively unimportant information.

The text panel should be outside the 270 by 270 mm minimum area designated for the route monitoring chart display by the IMO PS. The colours, symbols and luminance of this user interface panel should not degrade the SENC information on the chart display.

At night it is essential that any interface panel or other information added by the manufacturer to the screen carrying the chart display should never generate more light than the chart display itself. Great care is taken to reduce the light emitted by the chart in order to preserve the mariner's night vision, and it is dangerous to ship safety if added non-chart information defeats that purpose.

It is particularly important to limit the information shown using the conspicuous colour token "UINFD", which is reserved for important information. Even a small panel of text in this colour can produce more light on the bridge than the entire route monitoring chart display.

3.4.4 Text shown on a separate auxiliary screen

A separate screen may be provided for text display, either instead of or in addition to a panel on the main screen used for the route monitoring display. The presentation on this auxiliary screen need not follow these specifications in detail, but should conform in general, to avoid confusion, and should meet the same bridge lighting constraints.

All information displays should be designed in accordance with ergonomic principles.

4 SPECIFICATIONS FOR COLOURS

4.1 General

The ECDIS manufacturer can use any technology to build his display as long as his display fulfils the requirements of this specification. It is known that at least displays based on CRT, TFT or LCD can be made to fulfil the requirements of this standard.

The colours are specified in CIE (Commission Internationale de l'Eclairage) xy chromaticity coordinates and luminance L. *CIE colour coordinates are used because any other colour specification, such as RGB, is specific to a particular monitor and so cannot be specified either in relative or in absolute terms.* The ECDIS colour scheme based on specification of colour tokens and colour conversion tolerances and tests are described in sections 4.2.6 and 5.2.3.

The Colour Tables are in the Presentation Library, Part I, Appendix A. The Colour Tables are also included in the .dai file of the digital Presentation Library.

Note that these colour specifications apply to both the operational chart display (for route planning and route monitoring), and also to any text on the same screen as the chart display.

The colour tables have been carefully designed by perception specialists to give the maximum clarity and contrast between features on the display under all light conditions on the bridge.

4.2 Colour Assignment

Since chart and navigation lines and symbols must show clearly against the background shades, the colour tables were constructed by first selecting the background area shades and then selecting colours for lines and symbols that contrast with their background. In selecting foreground colours for point and line features, lines and symbols, the aim has been to highlight important information by giving it greater contrast with the background.

In order to accommodate the very large change in bridge lighting between bright sun and dark night, the colours switch from a light background with dark foreground details, which has been found to give the best contrast under bright sun, to a dark background with light foreground details by night. The night display has to be dim enough that it can be viewed without impairing the mariner's night vision. The Dusk table is also a black-background table, for optional use by day as well as at twilight.

The design of both colours and symbols has concentrated on ensuring that important chart and navigation features remain clearly visible under the extremes of bright sun and dark night viewing.

The general assignment of colours is given in Table 1 and condensed Colour Tables are in Table 2.

4.2.2 Bright Sunlight or Night viewing - Use of filters, etc.

The information-carrying capability of the ECDIS display is curtailed at the extremes of bright sunlight and night viewing. The reasons, and some remedies, are described in this section.

Bright sun. *Some of the strong ambient light on the bridge is reflected off the back of the display screen face plate and arrives at the mariner's eye mixed with the light generated by the monitor which carries the image of the ECDIS display. This display image is further diluted by light entering the mariner's eye directly from the brightly-lit bridge. The effect is to make the display look washed out; contrast between features may be severely reduced. In the extreme case of sunlight shining directly on the screen, no information at all will be visible. In addition, reflections on the face of the monitor from objects close to the screen, particularly a mariner's white shirt, may mask parts of the display.*

The ECDIS display should be situated where direct sunlight will not shine onto it, nor into the eyes of the mariner looking at it. A visor around the face of the screen may help. A filter may also help, (*because it attenuates the sunlight twice, both when incident and when reflected, whereas the monitor image is attenuated only once*). Low attenuation neutral density filters may be used, such as a 2 times attenuation filter designated (logarithmically) "0.3 ND". Polarised filters should be an advantage. Ideally, the bridge windows should have glare reducing glass and the inside of the bridge should have non-reflecting paint.

Night. *The need to preserve night vision requires that the illumination from the screen be reduced to a lower level than is desirable from considerations of clear viewing. The light level from night colour tables is below that which provides full contrast capability. Consequently some area-fill colours are indistinguishable on the night display, as noted in section 3.2.2 (2), and colours of lines may be difficult to distinguish.*

An additional problem for CRT type of monitor is that the R,G & B guns of the CRT may drop to the cut-off point at these very low DAC (digital to analog converter) voltages, particularly on an ageing CRT. Because good quality neutral filters reduce illumination without significantly affecting colour, and even tend to enhance contrast their use is recommended for the night display.

4.2.3 Display calibration and verification

The ECDIS display should be calibrated initially in order to transform the CIE colour table coordinates to screen coordinates. The main components of the ECDIS display are the monitor and the image generator. Both the monitor and the image generator used to drive the ECDIS display can be calibrated together as a colour generating unit. Another alternative is to calibrate separately both the monitor and image generator

The following international standards describe methods for calibration of a monitor's RGB values to produce an output. Other methodologies may be followed, but the same verification test requirements apply regardless of method.

CIE 122-1996

Technical Report: The Relationship between Digital and Colorimetric Data for Computer-Controlled CRT Displays

IEC 61966-3-2000

Multimedia systems and equipment -Colour measurement and management - Part 3: Equipment using cathode ray tubes, Edition 1

IEC 61966 - 4-2000 Multimedia systems and equipment-Colour measurement and management - Part4: Equipment using liquid crystal display panels, Edition 1

The ECDIS display calibration should be verified for type approval of all monitors as described in section 5.2.3.

4.2.4 Colour control; contrast and brightness controls

There are a variety of technologies available for monitors to be used for ECDIS display. Different technologies have different methods to control colour, contrast and brightness, but some basic rules apply for all of them.

4.2.4.1 Effect of controls.

The contrast control of a display generally shortens or extends the range of luminance available, making the display appear darker or brighter.

On the other hand, the brightness control shortens or extends the range of colour saturation available by adding white (which extends the range by making colours other than black less saturated), or subtracting white (colours become darker, more saturated.)

To the viewer, it has much the same apparent effect as contrast, but it achieves this by altering the colour contrast of the colour tables between foreground and background colours, and this may result in some features becoming harder to see, particularly at night. More importantly, making the night display more saturated may drop some dark colours below the cut-off point, into black, thus losing distinctions such as shallow versus deep water.

4.2.4.2. Use of the controls.

Colour tables are provided for day, dusk and night. The mariner should be provided with the control to make fine adjustments between these tables; the calibration position should be marked as a reference for this.

For a CRT type of monitor the brightness control should be preset, i.e. used only when essential, with provision to return to the calibrated setting.

LCD and other monitor technologies have a variety of controls. The general principle is that all available controls should have a provision to return to the calibrated settings and that only appropriate controls should be made available for the mariner.

The ECDIS manual should carry a warning that careless use of the display controls may adversely affect the visibility of information on the display.

4.2.4.3. Initial setting of the controls.

The controls should be set up in preparation for initial calibration, and their positions marked at that time (e.g. by a detent) so that they are recoverable.

4.2.4.4. Re-adjustment of the controls.

In case the controls go out of adjustment in use, they may be re-adjusted onboard ship by means of the Colour Differentiation Test Diagram described in section 5.2.5 and provided in the Presentation Library, Part I, see sections 16.3 and 17.8.

4.2.4.5. Setting the controls for route monitoring.

The ECDIS display carries far more detail than a radar display, and requires correspondingly more attention to the correct selection of colour table and the correct adjustment of the controls.

This particularly affects the black-background displays, and is critically important at night, because all colours of the night table, particularly those for large areas, have to be set very dark to avoid loss of night vision, and if the control is turned down too far these colours will disappear into the black background. As a result, chart information will be lost.

The situation will be worse if one of the day tables is improperly dimmed for use at night, instead of switching to the night table.

It is important that the display be adapted to lighting conditions on the bridge by selecting the correct colour table: "Day" for bright sunlight; "Day" or "Dusk" for general daylight viewing; "Dusk" for twilight; and "Night" for the night-darkened bridge.

The controls should only be used for fine adjustment within the appropriate colour table.

To ensure that the controls are always set to a level above that at which information will be lost, the black-adjust symbol BLKADJ should be available to the mariner, treated as "Standard display", to be called up at any convenient point on the screen. The instructions for its use by the mariner should be incorporated in the "Users instructions" for the ECDIS.

Below is an example of instructions for a CRT type of Monitor:

1. First, set contrast to a maximum, brightness to a minimum. Look at the black-adjust symbol. Then either:

- 2A. If the centre square is not visible, turn up the brightness until it just appears.

or:

- 2B. If the centre square is clearly visible (with contrast at maximum, brightness at minimum), turn the contrast down until the inner square disappears, then turn contrast back up until the inner square is just visible again.

(If the above adjustment is not successful, select a more appropriate colour table and repeat this procedure).

The "black level" is now correctly set. If a brighter display is required use the contrast control, but it is better not to re-adjust the controls unless lighting conditions on the bridge change.

Note that the black-adjust symbol should be displayed to check that the inner square remains visible on the following occasions:

- every time that the brightness or contrast controls are adjusted,
- every time that the display is switched to the night colour table.

Below is an example of instruction for LCD type of Monitor. The LCD type of monitor used in this example has only one mariner control, which is called brilliance. Internally the monitor has also other controls available for service engineers. These internal controls include also controls named as contrast and brightness.

1. First, set brilliance to calibration position. Look at the black-adjust symbol. Then either:

2A. If the centre square is not visible, turn up the brilliance until it just appears.

or:

2B. If the centre square is clearly visible, turn down the brilliance until the inner square disappears, then turn brilliance back up until the inner square is just visible again.

(If the above adjustment is not successful, select a more appropriate colour table and repeat this procedure).

The "black level" is now correctly set. If a brighter display is required use the brilliance control, but it is better not to re-adjust the controls unless lighting conditions on the bridge change.

Note that the black-adjust symbol should be displayed to check that the inner square remains visible on the following occasions:

- every time that the brightness or contrast controls are adjusted,
- every time that the display is switched to the night colour table.

It is recommended that the BLKADJ symbol be displayed automatically all the time that the night colour table is selected, with a mariner over-ride to remove it if necessary.

4.2.5 The colour tables

There are three colour tables, all of which must be made available to the mariner. These are listed in a condensed form in Table 2 and specified in detail in the Presentation Library. They are as follows:

DAY (table 2.1) The "Day" table uses a white background as a result of a comparative test outdoors in bright sunlight which showed that a display background of maximum luminance gives the best contrast achievable under near-washout conditions. This conclusion has been confirmed by subsequent sea experience.

DUSK (table 2.2) The "Dusk" colour table is a black background table, which may also be used by day as a mariner's option.

NIGHT (table 2.3) At night the light emitted by the display must be strictly limited to avoid impairing night vision. In case the luminance needs to be further reduced, the "Night" colour table may be augmented by a luminance-reducing neutral density filter which should have 8 times attenuation, designated (logarithmically) "0.9 ND". (This is a manufacturer's option).

4.2.6 The colour scheme - colour tokens

The colour scheme of the Presentation Library is designed to fit current computer architecture. A digital look-up table assigns all object/attribute combinations of features from the SENC to one of 64 "colour tokens". A few tokens apply to only one feature, but most include a group of similar features; e.g. traffic lanes, traffic direction arrows, prohibited areas and other such features share the "trfcd" for "traffic control dominant (conspicuous)" colour token. In turn, each token is assigned colour coordinates in the digital colour tables of the Presentation Library. Tables 2 and 3 at the end of this document illustrate how this scheme works.

4.2.7 Transparency

Transparent area colour fill is used at present:

- (i) so that the background colours, lines and symbols show through an area shade (e.g. depth shades and contours should show through a traffic separation zone),*
- (ii) to reduce the prominence of a large symbol (e.g. too prominent a centred anchorage area symbol would cause clutter on the display).*

Transparent fill can be achieved in two ways:

- 1.) with a given percentage of the pixels having the transparent fill colour (see Presentation Library, Part I, section 8.4.2),
- 2.) by mixing the fill and underlay colour according to the procedure given in the Presentation Library, Part I, section 7.1.3. This must be done in such a way that no appearance of change in colour or shape occurs in any SENC feature on the display, at any intermediate transparency value. The underlying SENC information must remain distinguishable, except when the overlay colour approaches 100%, in which case Section 2.3.2 (b) applies, and an indication is required.

5 SPECIFICATIONS FOR THE DISPLAY SCREEN

5.1 Physical display requirements

The requirements of S-52 for the main graphic display are:

"Size: minimum effective size of the area for chart display: 270 x 270 mm.

"Resolution: minimum lines per mm (L) given by $L=864/s$, where s is the smaller dimension of the chart display area. (e.g. for the minimum chart area, $s=270$ mm and the resolution $L=3.20$ lines per mm, giving a "picture unit" size of 0.312 mm)

"Colours: 64.

Information should be displayed in the ECDIS on one or more physical screens, which may be divided into more than one chart display. Information may be displayed automatically, on demand or as a result of mariner's selection.

Redraw during route monitoring to follow the ship's progress, including scale changes due to change in the scale of the chart information, should take less than 5 seconds. Demands by the mariner that cannot be predicted by the ECDIS, such as draw at a different scale or in a different area may take more than 5 seconds. In the latter case:

- the mariner should be informed;
- the display should continue route monitoring until the new information is ready to draw within 5 seconds.

5.2 Additional Requirements

5.2.1 Reproducing small features and symbols

The specifications above permit a chart display whose minimum resolution (lines/mm) may vary depending on the size of the display. To maintain a clearly readable chart display under this flexibility requires the following constraints to ensure that enough "picture units" (pixels) are always used to draw small features and symbols clearly:

- (1) Chart features: Chart features should never be drawn with fewer "picture units" (i.e. lines, pixels, dot-pitch intervals) than when drawn on a 270 x 270 mm chart area at SENC scale.
- (2) Symbols: *For clear representation, symbols require a minimum number of picture units, depending on their complexity. A simple chart symbol should extend about 12 pixels (that is at least 3.5mm for an IHO standard screen.) See section 3.1.5 for details on the size of symbols.*

5.2.2 Colour display capability

The colours, as specified in CIE x,y chromaticity co-ordinates and luminance L, are intended for a display capable of at least 256 luminance steps in each of red green and blue.

For night performance it is essential that the ECDIS hardware has a graphics card capable of giving "blacker than black", i.e. complete control of colour, and that the software can control that function.

For CRT type of monitor cathode (beam) current stabilisation is desirable, to prevent dark colours dropping below the cut-off point.

5.2.3 Colour conversion tolerances and tests

5.2.3.1 Tolerances. The tolerances quoted below apply only to the process of converting CIE colour coordinates to RGB values, and so should be evaluated shortly after the ECDIS leaves the manufacturer's plant.

Considerable operational experience will be needed before it will be possible to state colour maintenance tolerances for ECDIS onboard ship.

The colour tables developed have been selected to ensure maximum colour discrimination between features. Colour discrimination depends on both the colour difference and the luminance difference between two colours. Colour science (as represented by the C.I.E. colour convention) has defined colour difference units ΔE^ . The ΔE^* metric is a measure of the overall discrimination (including both colour and luminance differences). As a metric for ECDIS colour accuracy, a measure of the discrimination in colour alone, excluding luminance differences has been defined as a subset of ΔE^* referred to as $\Delta(u^*,v^*)$.*

$$\Delta(u^*,v^*) = \text{SQRT} [(u_2^*-u_1^*)^2 + (v_2^*-v_1^*)^2]$$

$$\Delta E^* = \text{SQRT} [(L_2^*-L_1^*) + (u_2^*-u_1^*)^2 + (v_2^*-v_1^*)^2]$$

Calculations of L^ , u^* , and v^* must be made using as reference the chromaticity and luminance specified for the brightest white colour token in the respective colour table (Y_0 , u_0 , y_0); where Y_0 is the luminance in units of cd/m^2 . Note: this is not the brightest white of the monitor.*

Note: " Δ " represents the Greek letter "Delta", although it may appear differently on some computers.

The tolerances for the conversion of the colour tables from the CIE colours defined in these specifications to the actual RGB values for the ECDIS CRT are defined in three terms:

- 1. Overall discrimination between actual colours within the converted table: ΔE^* . This is to ensure that all the colours within the RGB table remain discriminably separate, i.e. that the relative colour distinctions have been maintained.*
- 2. Colour discrimination differences between the defined and the actual values: $\Delta(u^*,v^*)$. This is to ensure that the actual RGB colours resulting from the conversion remain reasonably close to the CIE colours defined in the specifications, i.e. that the blues stay blue and the greens stay green.*
- 3. Luminance differences between the defined values and the actual values: L . This is to ensure that the luminance remains the same within acceptable limits.*

Note: The CIE L*u*v* human perception colour model, which is the source of the tolerances described above, has not yet been evaluated at the low luminances of the night colour table, at which the less colour-sensitive rods of the eye take over from the daytime cones. Consequently these tolerances should not be applied to the night table, and for type-approval purposes they are restricted to the bright sun table.

Colour tolerance values:

1. The discrimination difference between any two colours displayed (except those with a tabular ΔE^* less than 20) should be not less than 10 ΔE^* units.

Token	Colour x, y, L	Token	Colour x, y, L	ΔE^*
DEPMD	(.27 .30 65) pale blue	CHWHT DEPDW UIBCK	(.28 .31 80) white	11
CHBRN	(.42 .45 30) brown	ADINF	(.41, .47 35) yellow	14
DEPMS	(.24 .26 55) medium blue	DEPVS UIAFD	(.22 .24 45) medium blue	17
DEPMD	(.27 .30 65) pale blue	CHGRF NODTA Ed 3.3 colours have greater ΔE	(.28 .31 45) faint grey	18

2. The difference between the colour displayed and the CIE colour defined in these specifications should be not greater than 16 $\Delta(u^*,v^*)$ units. If a monitor is independently tested, then the difference must not be greater than $\Delta(u^*,v^*)$ units.
3. The luminance of the colour displayed should be within 20% of its specified value. Black is a special case and the luminance of it must not be greater than 0.52 cd/m² for bright sun colour table.

5.2.3.2 Instrumental calibration verification test. For CRT displays, an instrumental test to check that the results of the colour conversion calibration are within tolerance should be made by displaying the colours of the Day colour table (restricted to colour pairs of tabular ΔE^* greater than 20); measuring their CIE coordinates x,y and L; and applying a tolerance test. For LCD displays the instrumental test should be applied to all three colour tables.

Note that since the tolerance test is intended solely to check successful colour calibration, and not to test colour maintenance at sea, this test should be performed on the bench in the manufacturer's or type-approval authority's plant under normal conditions of temperature, humidity and vibration.

Manufacturers of ECDIS can choose between two different methods of colour calibration. The first method is a test of a monitor as part of an integrated system.

In this method both the monitor and the image generator parts of ECDIS display are tested together. The second method is an independent test of the monitor. In this method the monitor and the image generator of ECDIS display are separately tested against a reference (i.e. the monitor is tested against a reference image generator and the image generator is tested against a reference monitor). The second method has tighter tolerance for displayed colour than the first method (see section 5.2.3.1).

5.2.3.3 Test using Colour Differentiation Test Diagram. The dusk and night tables should be checked subjectively by means of the colour differentiation test diagram, which is provided as a S-57 file on the Presentation Library CD (.tif file diagrams must not be used for this purpose), as follows:

- (1) The person carrying out the test should have passed the Ishihara colour blindness test, or other test used to qualify bridge watchkeepers, and should adapt to night viewing for 10 minutes before checking the night display;
- (2) The controls should be set to their calibrated settings;
- (3) While the display is off, adjust the ambient light reflected from white paper positioned on the display screen to the following values:

<u>Colour table</u>	<u>Light level</u>
Day	200 cd/sq m
Dusk	10 cd/sq m
Night	darkness (the ECDIS display is the predominant light source)

Preferably use natural daylight for the day table.

- (4) Under each of the above conditions, display the appropriate colour differentiation test diagram described in section 5.2.5 for the colour tables. Select each table in turn and ensure that:
 - each foreground diagonal line is clearly distinguished from its background;
 - the foreground lines representing yellow, orange, magenta (purple), green, blue and grey may be clearly identified.

5.2.4 (Colour Calibration) N/A.

5.2.5 Colour Differentiation Test Diagram; grey scale

The use of symbol BLKADJ to adjust the controls every time that the night colour table is selected has been described in section 4.2.4.5. This section describes further checks on the colour performance of the ECDIS display.

A multi-purpose colour differentiation test diagram is illustrated in the Presentation Library, Part I, section 16.3, and is described in the Presentation Library, Part I, sections 18.3 and 18.4. This consists of 20 squares each coloured with one of the 4 main background colour fills (such as shallow water blue), and each having a diagonal line in one of the six important foreground colours (such as mariner's orange). Each diagonal line is 2 pixels wide.

The diagram is in the form of an ENC and so can be displayed using any of the three colour tables.

This diagram is intended:

- (1) for use by the mariner to check and if necessary re-adjust the controls, particularly for use at night;
- (2) for use by the mariner to satisfy himself that an ageing ECDIS display remains capable of providing the necessary colour differentiation;
- (3) for initial colour verification of the day, dusk and night colour tables.

Both the Colour Test Diagram and the instructions for its use (see Presentation Library, Part I, sections 17.7 and 18.2) should be made available to the mariner.

In addition, a grey scale is described in Annex C for use by maintenance technicians in checking colour tracking in an ageing display.

The Colour Differentiation Test diagram is intended for use off-line. It is not needed during route monitoring.

Note that the Colour Differentiation Test Diagram will not be true to colour unless it is projected on a calibrated screen and is generated using the digital format described in the Presentation Library, Part I, sections 11 and 17 which correctly reproduces the colour tokens of the Presentation Library.

TABLE 1: GENERAL COLOUR ASSIGNMENT FOR ECDIS FEATURES

<u>black/white</u>	(black by day / white by night) is used for critical navigation features which need highlighting by contrast against their background to give them adequate prominence. Examples are the own-ship symbol, dangerous soundings equal to or less than the safety depth, buoys, conspicuous objects on land etc. It is also used for text, which is less clear in any other colour.
<u>white/black</u>	(white by day / black by night) as a background area shade is used for deep, safe, water.
<u>magenta</u>	is used to highlight critically important features such as isolated dangers, traffic routes, anchorages; and for restricted areas, submarine cables, gas pipelines etc. It is also used for aids to navigation and services such as daymarks, racons, and pilot stations.
<u>grey</u>	is used for many features which are black on the paper chart. It is used with thick lines for critical physical objects such as bridges and overhead cables, and with thin lines for important but less critical physical features such as non-dangerous soundings, sandwaves, overfalls, water pipelines and fish farms. It is similarly used for chart features such as fairways, harbour areas, tidal information and for information about the chart such as quality of chart data, overscale areas, etc.
<u>grey</u>	as a background area shade is used with a prominent pattern for no-data areas.
<u>blue</u> <u>blue</u>	as a background area shade is used to distinguish depth zones. as foreground colour for AIS and VTS information; also reserved for future requirements.
<u>green</u>	is used for the radar image and synthetics, and for buoy and lights colours.
<u>blue-green</u>	is used for transferred ARPA.
<u>yellow-green</u>	('moss-green') as a background area shade is used for the intertidal area between high and low waterlines,
<u>yellow</u>	is used as the manufacturer's colour; for the mariner's transparent colour fill; and for buoy and lights colours.
<u>red</u>	is used for the important planned route, for the mariner's danger highlight, and for buoy and lights colours.
<u>orange</u>	is the mariner's colour, for notes, chartwork, chart corrections. The scale bar, north arrow, and mariner's navigation objects such as EBLs and VRMs are also orange.
<u>brown</u>	as a background area shade is used for the land, and dark brown is used for features on land and in the intertidal area that do not have any strong significance for navigation.

TABLE 2: CONDENSED COLOUR TABLES

Note: These tables are for explanation only. Use the updated tables in the Presentation Library (S-52, Annex A, Appendix A, "Colour Tables: Day, Dusk, Night") for operational purposes.

Colour table 2.1: DAY

Colour	x	y	L	Tokens
black	.28	.31	0.0	SNDG2 SHIPS PSTRK CHBLK UINFD OUTLW
grey	.28	.31	0.6	BKAJ1
	.28	.31	1.6	BKAJ2
grey	.28	.31	10	DEPSC CSTLN CHGRD UINFF UIBDR
	.28	.31	25	SNDG1 DEPCN CHGRF SYTRK RESGR RES01 RES02
	.28	.31	40	NODTA
white	.28	.31	80	DEPDW CHWHT UIBCK
blue	.18	.15	22	RESBL UINFB
	.21	.22	45	DEPVS UIAFD
	.23	.25	55	DEPMS
	.26	.29	65	DEPMD
magenta	.30	.17	20	ISDNG TRFCD CHMGD UINFM
	.28	.24	48	TRFCF CHMGF
green	.31	.56	60	RADHI CHGRN LITGN UINFG
	.31	.56	20	RADLO
blue-green	.26	.42	30	ARPAT
yellow-green	.26	.36	35	DEPIT
yellow	.41	49	70	CHYLW LITYW
	.41	49	35	ADINF
brown	.45	.42	15	LANDF OUTLL
	.39	.43	30	CHBRN
	.35	.39	50	LANDA OUTLL UIAFF
orange	.50	.40	32	CURSR NINFO CHCOR APLRT SCLBR UINFO
red	.58	.35	18	PLRTE
	.48	.30	25	DNGHL CHRED LITRD UINFR

Colour table 2.2: DUSK

Colour	x	y	L	Tokens
white	.28	.31	36	SHIPS PSTRK SNDG2 CHWHT UINFD
grey	.28	.31	20	DEPSC CSTLN CHGRD CHBLK UIBDR UINFF RESGR
	.28	.31	10	DEPCN CHGRF SNDG1 SYTRK RES01 RES02 RES03
	.28	.31	7.0	NODTA
	.28	.31	0.72	BKAJ2
black	.28	.31	00	DEPDW, UIBCK, OUTLW, BKAJ1
blue	.18	.15	10	RESBL UINFB
	.21	.22	5.0	DEPVS UIAFD
	.23	.25	3.0	DEPMS
	.25	.29	1.0	DEPMD
magenta	.28	.24	18	TRFCD CHMGD ISDNG UINFM
	.30	.17	7.0	TRFCF CHMGF
green	.31	.56	20	RADHI CHGRN LITGN UINFG
	.31	.56	7.0	RADLO
blue-green	.26	.42	17	ARPAT
yellow-green	.26	.36	6.0	DEPIT
yellow	.41	.49	24	CHYLW, LITYW
	.41	.49	12	ADINF
brown	.45	.42	12	LANDF UIAFF
	.39	.43	8.0	CHBRN
	.35	.39	5.0	LANDA OUTLL
orange	.50	.40	10	CURSR NINFO CHCOR APLRT SCLBR UINFO
red	.58	.35	8.0	PLRTE
	.48	.30	10	DNGHL CHRED LITRD UINFR

Colour table 2.3: NIGHT

Colour	x	y	L	Tokens
white	.28	.31	5.0	SNDG2 CHWHT SHIPS PSTRK UINFD
grey	.28	.31	2.5	CHGRD CHBLK CSTLN DEPSC UIBDR UINFF
	.28	.31	1.25	CHGRF SNDG1 DEPCN RESGR SYTRK RES01 RES02
	.28	.31	1.2	NODTA
	.28	.31	0.1	BKAJ2
black	.28	.31	00	DEPDW UIBCK OUTLW BKADJ1
blue	.18	.15	1.25	RESBL UINFB
	.21	.22	0.8	DEPVS UIAFD
	.23	.25	0.4	DEPMS
	.25	.29	0.2	DEPMD
magenta	.30	.17	2.0	ISDNG TRFCD TRFCF CHMGD CHMGF UINFM
green	.31	.56	2.5	RADHI CHGRN LITGN UINFG
	.31	.56	0.8	RADLO
blue-green	.26	.42	1.75	ARPAT
yellow-green	.26	.36	1.2	DEPIT
yellow	.41	.49	3.0	CHYLW LITYW
	.41	.49	1.5	ADINF
brown	.45	.42	3.2	UIAFF
	.45	.42	1.6	LANDF
	.39	.43	1.3	CHBRN
	.35	.39	0.8	LANDA OUTLL
orange	.50	.40	1.25	CURSR SCLBR NINFO APLRT CHCOR UINFO
red	.48	.30	1.25	DNGHL CHRED LITRD UINFR
	.58	.35	0.9	PLRTE

TABLE 3: ALPHABETICAL LIST OF COLOUR TOKENS

<u>token</u>	<u>colour</u> (day/night)	<u>Use</u>
ADINF	yellow	Mariner's and Manufacturer's added information
APLRT	orange	alternate planned route.
ARPAT	blue-green	ARPA target and vector.
BKAJ1	black	black colour of black-adjust symbol
BKAJ2	grey	dark grey colour of black-adjust symbol
CHBLK	black/white	general.
CHWHT	white/white	general.
CHGRD	grey, conspic	general.
CHGRF	grey, faint	general.
CHBRN	brown	built-up land areas, etc.
CHGRN	green	general, including buoys.
CHRED	red	general, including buoys.
CHYLW	yellow	general, including buoys.
CHMGD	magenta, conspic	dangers, important magenta chart features.
CHMGF	magenta, faint	less important magenta chart features.
CHCOR	orange	manual chart corrections made by the mariner.
CSTLN	grey, conspic	coastline (high water line), including wharf and dock faces.
CURSR	orange	cursor, also mariner's EBLs and VRMs.
<u>DEPDW</u>	white/black	area fill colour for deep water, depth greater than the deep contour selected by the mariner.
<u>DEPMD</u>	blue	area fill for medium-deep water, deeper than the Safety Contour.
<u>DEPMS</u>	blue	area fill for medium-shallow water, less than the Safety Contour.
<u>DEPVS</u>	blue	area fill for very shallow water, less than the shallow contour.
<u>DEPIT</u>	yellow-green	area fill for the intertidal zone between the drying line and the high water line.
DEPSC	grey, conspic	own-ship's Safety Contour, selected by the mariner.
DEPCN	grey	other depth contours
DNGHL	red	danger highlight symbol, applied by the mariner.
ISDNG	magenta, conspic	isolated danger, selected automatically by ECDIS depending on the Safety Contour selected by the mariner.
<u>LANDA</u>	brown	area fill for land that is not built-over.
LANDF	brown, conspic	contrasting brown for land features (buildings, dykes etc.)
LITRD	red	light flares and sectors.
LITGN	green	light flares and sectors.
LITYW	yellow	light flares and sectors.
NINFO	orange	navigator's information added to the chart by the mariner.
NODTA	grey	area for which there is no chart information.
OUTLW	black	outline colour to clarify overwritten symbols on water areas.
OUTLL	brown	outline colour to clarify overwritten symbols on land areas.
PLRTE	red, conspic	own-ship's planned route.
PSTRK	black/white	own-ship's past track from primary positioning system.

<u>token</u>	<u>Colour (day/night)</u>	<u>Use</u>
RADHI	green, conspic	high luminance radar colour for high echo intensity.
RADLO	green, faint	low luminance radar colour for low echo intensity.
RESBL	blue	symbol, line or text colour reserved for AIS and VTS
RESGR	grey	symbol, line or text colour reserved for future applications
RES01	grey	symbol, line or text colour reserved for future applications
RES02	grey	symbol, line or text colour reserved for future applications
RES03	grey	symbol, line or text colour reserved for future applications
SCLBR	orange, white	1 mile vertical bar to give general impression of display scale.
SNDG1	grey	soundings deeper than the mariner-selected Safety Depth.
SNDG2	black/white	dangerous soundings, equal to or less than the Safety Depth.
SHIPS	black/white	own-ship symbol or scaled shape, with velocity vectors.
SYTRK	grey	own-ship's past track from secondary positioning system.
TRFCD	magenta, conspic	important traffic routeing features.
TRFCF	magenta	less important routeing features.
TRNSP	transparent	used in "transparent" area fills ,(e.g. traffic separation zones), to let the background colour show through, say, 75% of the pixels.
<u>UIBCK</u>	white/black	user interface background.
UIBDR	grey	border to separate user interface from ECDIS chart display.
UIAFD	blue	area fill for use on user interface, water colour.
UIAFF	brown	area fill for use on user interface, land colour.
UINFD	grey, conspic	conspic colour for limited amount of important text.
UINFF	grey	normal colour for user interface text.
UINFB	blue	colour for symbols, lines and text on the user interface
UINFG	green	colour for symbols, lines and text on the user interface
UINFR	red	colour for symbols, lines and text on the user interface
UINFM	magenta	colour for symbols, lines and text on the user interface
UINFO	orange	colour for symbols, lines and text on the user interface

NOTES

1. There are 63 colours, plus TRNSP (which is not a colour), making 64 colour tokens.
2. Suffix "D" indicates "dominant", important, hence prominent (e.g. "TRFCD");
Suffix "F" indicates "faint", less important (e.g. "TRFCF").
Suffix "1" indicates non-dangerous, e.g. "SNDG1" is deeper than the Safety Depth;
Suffix "2" indicates dangerous, e.g. "SNDG2" is equal to or less than the Safety Depth.
3. The nine opaque area fills are underlined. These are the background colours for all other ECDIS information. These are deliberately made light by day to give maximum contrast for foreground colours in bright sun, and dark by night to avoid a large luminant area which would compromise night vision.
4. Note that the user interface background, UIBCK, and the deep-water area fill, DEPDW, are the same colour.

TABLE 4: 'CAUTIONARY' AND 'INFORMATION' AREAS

The cautionary area / information area distinction is reflected in the IMO PS Appendix 4 "Areas for which special conditions exist". It is the basis for symbolising those areas which do not have a specific symbol with either a "(!)" for a cautionary area or a "[i]" for an information area:

Cautionary Areas:

Routeing areas - Standard Display:

- Traffic separation zone (TSEZNE)
- Traffic routeing scheme crossing or roundabout (TSSCRS, TSSRON)
- Traffic routeing scheme precautionary area (PRCARE)
- Two-way traffic route (TWRTPT)
- Traffic separation scheme lane (TSSLPT)
- Deepwater route (DWRTPT)
- Recommended traffic lane (RCTLPT)
- Inshore traffic zone (ISTZNE)

Other cautionary areas - Standard Display:

fairway (FAIRWY)

- area to be avoided (RESTRN 14)
- entry prohibited/restricted (RESTRN 7, 8)
- anchoring prohibited/restricted (RESTRN 1,2)
- fishing/trawling prohibited/restricted (RESTRN 3, 4, 5, 6)

caution area (CTNARE)

- waiting area (RESARE CATREA 19)
- swinging area (RESARE CATREA 25)
- ferry area (FERYRT)

- navigation aid safety zone (RESARE CATREA 12)
- offshore production area (OFSPRD)
- offshore safety zone (RESARE CATREA 1)

- minefield (RESARE CATREA 14)
- submarine transit lane (SUBTLN)
- military practise area (MIPARE)
- military area (RESARE CATREA 9)
- degaussing area (RESARE CATREA 8)
- seaplane landing area (SPLARE)

Information areas - Standard Display:

anchorage area (ACHARE)
anchor berth (ACHBRT)

dumping ground (DMPGRD)

fishing ground (FSHGRD)
pipeline area (PIPARE)
cable area (CBLARE)

cargo transshipment area (CTSARE)
incineration area (ICNARE)

specially protected areas - sanctuaries etc. (RESARE CATREA 4,5,6,7,10, 18, 20,
22, 23, 27, 28)
no wake area (RESARE CATREA 24)

For further details, see conditional symbology procedures RESAREnn and
RESTRNnn in the Presentation Library, section 13.

IHO ECDIS PRESENTATION LIBRARY

The Presentation Library is published separately. See Annex A to S-52 on www.ihoint.org.

In summary the Presentation Library implements the display specifications in S-52 by decoding and symbolising the SENC. It contains:

1. the ECDIS symbol library, including the IEC navigation symbols,
2. the ECDIS colour tables for day, dusk and night viewing,
3. look-up tables with symbology instructions linking SENC objects to the appropriate colour and symbol and giving their IMO category, draw priority, priority over radar, and suggested viewing group,
4. conditional symbology procedures for:
 - cases where symbolising depends on circumstances such as the mariner's choice of safety contour,
 - cases where symbolising is too complex to be defined in a direct look-up table,
5. symbolising instructions for special cases which are not handled by 3. or 4. above, such as north arrow and scalebar, manual chart corrections, etc.,
6. description of the symbology instructions,
7. mariner's navigational objects, specified in the same format as chart objects for convenience in processing by the ECDIS,
8. supplementary features such as the ECDIS Chart 1, colour differentiation test diagram.

The IHO ECDIS Presentation Library is part of the S-52 package. A digital version is also available.

**PROCEDURE FOR INITIAL CALIBRATION OF COLOUR DISPLAYS
(Deleted)**

PROCEDURE FOR MAINTAINING THE CALIBRATION OF DISPLAYS

C.1 Introduction

The application of ECDIS to practical marine use necessitates the development of a greater understanding of monitor limitations as they relate to an accurate colour display and a marine environment.

The factors that affect colour accuracy and the life of the monitor are discussed and an approach for onboard monitor testing and calibration is described in this Annex.

C.2 System Requirements

Monitor calibration is necessary for accurate colour reproduction. Several factors are important to review about the monitor system:

1. When the monitor is initially installed in the system, it should be calibrated and the system matched to the IHO colour tables.
2. In use, the monitor should not let the colours shift beyond a certain perceptible relative limit. Each colour must be perceived as it was intended, and in a relative sense, one colour must not be mistaken for another.
3. When a colour shift occurs that is beyond limits, it should be possible to identify that the shift is beyond limits without the need for special instruments and completely dark environments.

C.2.1 (Display calibration drift processes) N/A

C.3 Verification of the display performance at sea

C.3.1 Calibration tests for verification of display's performance onboard ship

ECDIS manufacturer's user guides must describe how a mariner should carry out verification of the ECDIS display at sea. The Colour Differentiation Test Diagrams with the S-52 presentation library have been provided for this task.

C.3.1.1 Greyscale test

The Greyscale test shall be used to determine the colour tracking of the monitor. It is general, it is non quantitative and requires judgement on the part of the operator to use. On the other hand, it is quite sensitive, and familiar to video technicians.

This test is simple to use. It consists of putting a greyscale of at least 8 steps from black to white on the screen. The greyscale should be made of rectangles that are at least 2.5 cm by 10 cm. These can be oriented in either a horizontal or vertical

direction. The greyscale is critically observed by the viewer from a distance of about 50 cm to 100 cm and any colour shifts in any of the rectangles of grey are noted.

The greyscale should appear to be a neutral shade of white in all rectangles. Each should appear to be the same 'colour' as the others, even though varying in intensity from black to white. Colour shading in any of the rectangles indicates a problem in the adjustment of the display.

Interpretation of results:

The observer will see either a greyscale that is pure and free from colouring, or one which shows varying degrees of shading. If no colouring is seen, then the display is performing properly. If slight shading is seen, then the display is usable. If there is a lot of shading, then the display may be providing false colour information.

This test meets the criteria of simplicity and universality, but fails to be either quantitative or accurate. It should be used as an indication of performance of the display, but not an absolute measure. It should be noted that the identification and the degree of problem will vary according to the operator, so should not be considered as a quantitative test.

C.3.1.2 Colour Differentiation Test Diagram

At the mariner's level, a test is required that reassures him that the display is functioning adequately or alternatively that servicing is required. This is provided in the Presentation Library, Part I, sections 16.3, 18.2 and 18.3. It provides test diagrams that allows the mariner to confirm that his display clearly differentiates the important colours, as well as acting as a test chart for setting the controls for night use.
